

## Product datasheet for **TA327060**

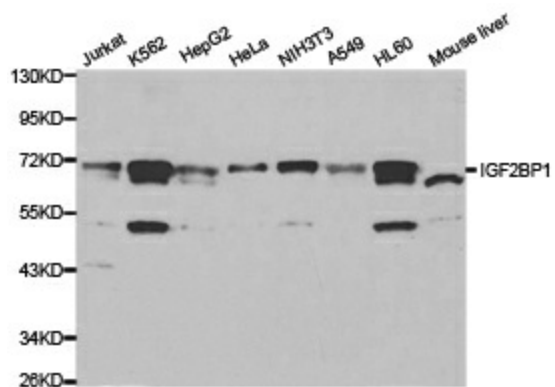
### IGF2BP1 Rabbit Polyclonal Antibody

#### Product data:

|                       |   |
|-----------------------|---|
| Product Type:         | Primary Antibodies  |
| Applications:         | ICC/IF, IHC, WB   |
| Recommended Dilution: | WB 1:500 - 1:2000   |
| Reactivity:           | Human, Mouse, Rat   |
| Host:                 | Rabbit  |
| Isotype:              | IgG   |
| Clonality:            | Polyclonal  |
| Immunogen:            | A synthetic peptide of human IGF2BP1  |
| Formulation:          | Store at -20C or -80C. Avoid freeze / thaw cycles. Buffer: PBS with 0.02% sodium azide, 50% glycerol, pH7.3   |
| Concentration:        | lot specific  |
| Purification:         | Affinity purification   |
| Conjugation:          | Unconjugated  |
| Storage:              | Store at -20°C as received.   |
| Stability:            | Stable for 12 months from date of receipt.  |
| Gene Name:            | insulin like growth factor 2 mRNA binding protein 1   |
| Database Link:        | <a href="#">NP_006537</a><br><a href="#">Entrez Gene 140486 Mouse</a> <a href="#">Entrez Gene 303477 Rat</a> <a href="#">Entrez Gene 10642 Human</a><br><a href="#">Q9NZI8</a>  |
| Background:           | Insulin-like growth factor-II mRNA-binding proteins (IMPs) belong to a family of zipcode-binding proteins. Three members of this family, IMP1, IMP2, and IMP3, have been identified. They contain two RNA recognition motifs, four K homology domains, and were found to function in mRNA localization, turnover, and translation control. Research studies have implicated these proteins in a variety of physiological and pathological processes, such as growth and development, testicular neoplasia, and melanocytic neoplasia. |
| Synonyms:             | CRD-BP; CRDBP; IMP-1; IMP1; VICKZ1; ZBP1  |



[View online »](#)

**Product images:**

Western blot analysis of extracts of various cell lines, using IGF2BP1 antibody.