

## Product datasheet for **TA327056**

### **RbAp48 (RBBP4) Rabbit Polyclonal Antibody**

#### **Product data:**

Product Type:	Primary Antibodies
Applications:	IF, IHC, WB
Recommended Dilution:	WB 1:500 - 1:2000;IHC 1:50 - 1:200
Reactivity:	Human, Mouse, Rat
Host:	Rabbit
Isotype:	IgG
Clonality:	Polyclonal
Immunogen:	Recombinant protein of human RBBP4
Formulation:	Store at -20C or -80C. Avoid freeze / thaw cycles. Buffer: PBS with 0.02% sodium azide, 50% glycerol, pH7.3
Concentration:	lot specific
Purification:	Affinity purification
Conjugation:	Unconjugated
Storage:	Store at -20°C as received.
Stability:	Stable for 12 months from date of receipt.
Gene Name:	RB binding protein 4, chromatin remodeling factor
Database Link:	<a href="#">NP_005601</a> <a href="#">Entrez Gene 19646 Mouse</a> <a href="#">Entrez Gene 313048 Rat</a> <a href="#">Entrez Gene 5928 Human</a> <a href="#">Q09028</a>



[View online »](#)

**Background:**

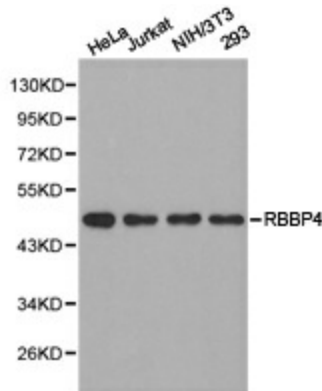
Retinoblastoma-associated proteins 46 and 48 (RBAP46 and RBAP48; also known as RBBP7 and RBBP4) were first characterized in human cells as proteins that bind to the retinoblastoma (Rb) tumor suppressor protein. Since then, these proteins have been shown to be components of many protein complexes involved in chromatin regulation, including the chromatin assembly factor 1 (CAF-1) complex and type B histone acetyltransferase complex HAT1, both of which function in chromatin assembly during DNA replication. RBAP46 and RBAP48 are also found in the nucleosome remodeling factor complex NURF, the nucleosome remodeling and histone de-acetylation complex NuRD, and the Sin3/HDAC histone de-acetylation complex. More recently, RBAP46 and RBAP48 were identified as components of the polycomb repressor complex PRC2, which also contains EED and Ezh2. RBAP46 and RBAP48 bind to the histone fold region of histone H4 and are believed to target these chromatin remodeling, histone acetylation, and histone de-acetylation complexes to their histone substrates.

**Synonyms:**

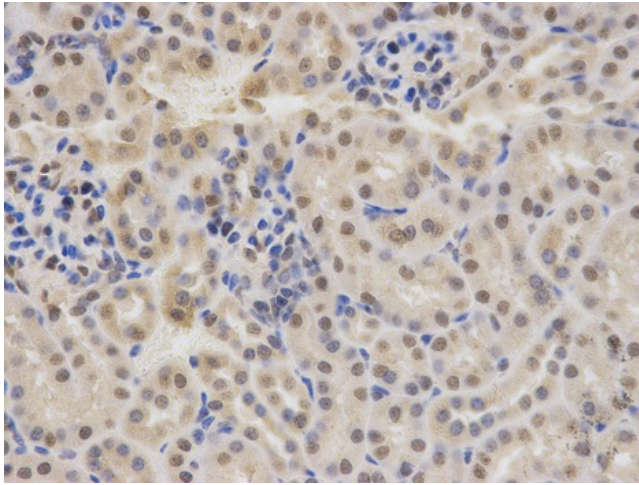
lin-53; NURF55; RBAP48

**Protein Families:**

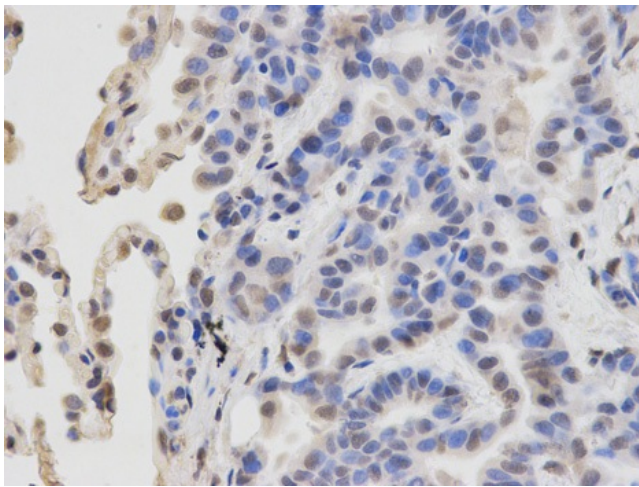
Druggable Genome, Transcription Factors

**Product images:**

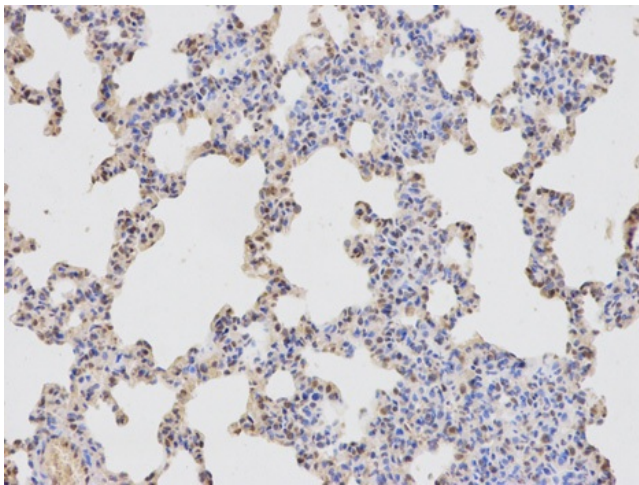
Western blot analysis of extracts of various cell lines, using RBBP4 antibody.



Immunohistochemistry of paraffin-embedded human lung cancer using RBBP4 antibody at dilution of 1:100 (400x lens).



Immunohistochemistry of paraffin-embedded mouse kidney using RBBP4 antibody at dilution of 1:100 (400x lens).



Immunohistochemistry of paraffin-embedded rat lung using RBBP4 antibody at dilution of 1:100 (200x lens).