

Product datasheet for **TA327055**

TLR8 Rabbit Polyclonal Antibody

Product data:

Product Type:	Primary Antibodies
Applications:	ICC/IF, IHC, WB
Recommended Dilution:	WB 1:500 - 1:2000; IF 1:50 - 1:200
Reactivity:	Human, Mouse, Rat
Host:	Rabbit
Isotype:	IgG
Clonality:	Polyclonal
Immunogen:	Recombinant protein of human TLR8
Formulation:	Store at -20C or -80C. Avoid freeze / thaw cycles. Buffer: PBS with 0.02% sodium azide, 50% glycerol, pH7.3
Concentration:	lot specific
Purification:	Affinity purification
Conjugation:	Unconjugated
Storage:	Store at -20°C as received.
Stability:	Stable for 12 months from date of receipt.
Gene Name:	toll like receptor 8
Database Link:	NP_619542 Entrez Gene 170744 Mouse Entrez Gene 684440 Rat Entrez Gene 51311 Human Q9NR97



[View online »](#)

Background:

The Toll-like Receptors (TLR) are a family of human receptors that share homology with the Drosophila Toll Receptors, which are involved in mediating dorsoventral polarization in developing Drosophila embryos and participate in host immunity. The TLR family members are characterized by a highly conserved Toll homology (TH) domain, which is essential for Toll-induced signal transductions. TLRs are type I transmembrane receptors that contain an extracellular domain consisting of several leucine-rich regions and a single cytoplasmic Toll/IL-1R like domain. Three TLR family members, TLR7, TLR8 and TLR9, belong to a subfamily of TLRs which are differentially expressed. TLR7 is expressed in lung, placenta and spleen. TLR8 is expressed in lung and peripheral blood leukocytes, and TLR9 is predominantly expressed in spleen, lymph nodes, bone marrow and peripheral blood leukocytes. TLR7, TLR8 and TLR9 stimulate the NF κ B signaling pathway, suggesting that they play a role in the immune response.

Synonyms:

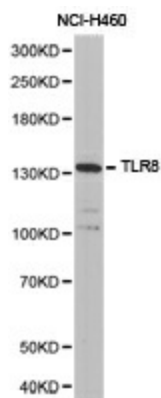
CD288

Protein Families:

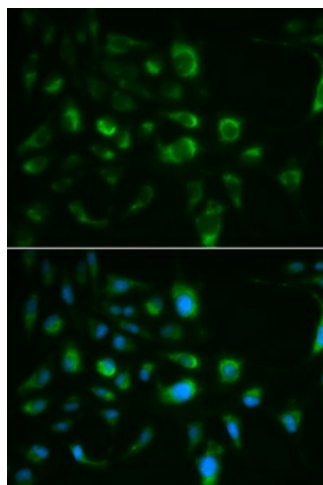
Druggable Genome, Transmembrane

Protein Pathways:

Toll-like receptor signaling pathway

Product images:


Western blot analysis of NCI-H460 cell lysate using TLR8 antibody.



Immunofluorescence analysis of MCF7 cell using TLR8 antibody. Blue: DAPI for nuclear staining.