

Product datasheet for **TA327046**

Protein C (PROC) Rabbit Polyclonal Antibody

Product data:

| | |
|-------------------------|---|
| Product Type: | Primary Antibodies |
| Applications: | WB |
| Recommended Dilution: | WB 1:500 - 1:2000 |
| Reactivity: | Human, Mouse, Rat |
| Host: | Rabbit |
| Isotype: | IgG |
| Clonality: | Polyclonal |
| Immunogen: | Recombinant protein of human PROC |
| Formulation: | Store at -20C or -80C. Avoid freeze / thaw cycles. Buffer: PBS with 0.02% sodium azide, 50% glycerol, pH7.3 |
| Concentration: | lot specific |
| Purification: | Affinity purification |
| Conjugation: | Unconjugated |
| Storage: | Store at -20°C as received. |
| Stability: | Stable for 12 months from date of receipt. |
| Predicted Protein Size: | 52 kDa |
| Gene Name: | protein C, inactivator of coagulation factors Va and VIIIa |
| Database Link: | NP_000303 Entrez Gene 19123 MouseEntrez Gene 25268 RatEntrez Gene 5624 Human P04070 |
| Background: | This gene encodes a vitamin K-dependent plasma glycoprotein. The encoded protein is cleaved to its activated form by the thrombin-thrombomodulin complex. This activated form contains a serine protease domain and functions in degradation of the activated forms of coagulation factors V and VIII. Mutations in this gene have been associated with thrombophilia due to protein C deficiency, neonatal purpura fulminans, and recurrent venous thrombosis. |
| Synonyms: | APC; PC; PROC1; THPH3; THPH4 |

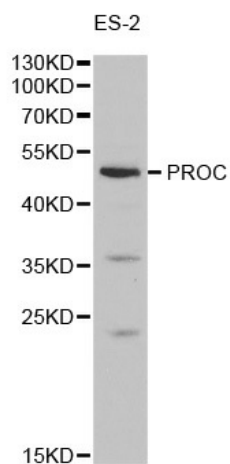


[View online »](#)

Protein Families: Druggable Genome, Protease

Protein Pathways: Complement and coagulation cascades

Product images:



Western blot analysis of extracts of ES-2 cell lines, using PROC antibody.