

## Product datasheet for **TA327045**

### LIPC Rabbit Polyclonal Antibody

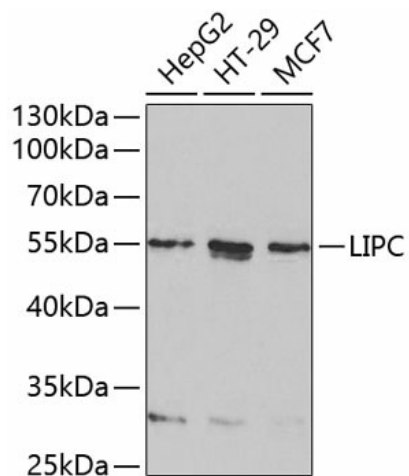
#### Product data:

|                       |   |
|-----------------------|---|
| Product Type:         | Primary Antibodies  |
| Applications:         | IF, IHC, WB   |
| Recommended Dilution: | WB 1:500 - 1:2000;IHC 1:50- 1:200   |
| Reactivity:           | Human   |
| Host:                 | Rabbit  |
| Isotype:              | IgG   |
| Clonality:            | Polyclonal  |
| Immunogen:            | Recombinant protein of human LIPC   |
| Formulation:          | Store at -20C or -80C. Avoid freeze / thaw cycles. Buffer: PBS with 0.02% sodium azide, 50% glycerol, pH7.3   |
| Concentration:        | lot specific  |
| Purification:         | Affinity purification   |
| Conjugation:          | Unconjugated  |
| Storage:              | Store at -20°C as received.   |
| Stability:            | Stable for 12 months from date of receipt.  |
| Gene Name:            | lipase C, hepatic type  |
| Database Link:        | <a href="#">NP_000227</a><br><a href="#">Entrez Gene 3990 Human P11150</a>  |
| Background:           | LIPC, also named as HTGL and HL, belongs to the AB hydrolase superfamily and Lipase family. It has the capacity to catalyze hydrolysis of phospholipids, mono-, di-, and triglycerides, and acyl-CoA thioesters. LIPC is an important enzyme in HDL metabolism. It binds heparin. |
| Synonyms:             | HDLCQ12; HL; HTGL; LIPH   |
| Protein Families:     | Druggable Genome, Secreted Protein  |
| Protein Pathways:     | Glycerolipid metabolism, Metabolic pathways   |



[View online »](#)

## Product images:



Western blot analysis of extracts of various cell lines, using LIPC antibody (TA327045) at 1:1000 dilution. | Secondary antibody: HRP Goat Anti-Rabbit IgG (H+L) at 1:10000 dilution. | Lysates/proteins: 25ug per lane. | Blocking buffer: 3% nonfat dry milk in TBST.