

Product datasheet for **TA327044S**

CBS Rabbit Polyclonal Antibody

Product data:

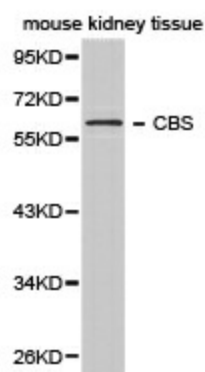
Product Type:	Primary Antibodies
Applications:	ICC/IF, WB
Recommended Dilution:	WB 1:500 - 1:2000;IF 1:50- 1:200
Reactivity:	Human, Mouse, Rat
Host:	Rabbit
Isotype:	IgG
Clonality:	Polyclonal
Immunogen:	Recombinant protein of human CBS
Formulation:	Store at -20C or -80C. Avoid freeze / thaw cycles. Buffer: PBS with 0.02% sodium azide, 50% glycerol, pH7.3
Concentration:	lot specific
Purification:	Affinity purification
Conjugation:	Unconjugated
Storage:	Store at -20°C as received.
Stability:	Stable for 12 months from date of receipt.
Gene Name:	cystathionine-beta-synthase
Database Link:	NP_000062 Entrez Gene 12411 Mouse Entrez Gene 24250 Rat Entrez Gene 875 Human P35520
Background:	The CBS gene encodes cystathionine beta-synthase, which catalyzes the first irreversible step of transsulfuration. The CBS enzyme is a homotetramer of 63-kD subunits and requires pyridoxal phosphate and heme for activity(PMID:11230183). CBS protein is localized in most areas of the brain, but predominantly in the cell bodies and neuronal processes of Purkinje cells and Ammons horn neurons(PMID:12588964). This antibody is specific to CBS.
Synonyms:	HIP4
Protein Families:	Druggable Genome



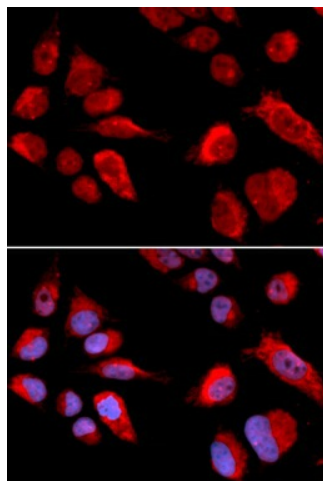
[View online »](#)

Protein Pathways: Cysteine and methionine metabolism, Glycine, serine and threonine metabolism, Metabolic pathways, Selenoamino acid metabolism

Product images:



Western blot analysis of extracts of mouse kidney tissue, using CBS antibody.



Immunofluorescence analysis of U2OS cell using CBS antibody. Blue: DAPI for nuclear staining.