

Product datasheet for **TA327042S**

Fibrinogen beta chain (FGB) Rabbit Polyclonal Antibody

Product data:

Product Type:	Primary Antibodies
Applications:	ICC/IF, WB
Recommended Dilution:	WB 1:500 - 1:2000
Reactivity:	Human, Mouse, Rat
Host:	Rabbit
Isotype:	IgG
Clonality:	Polyclonal
Immunogen:	Recombinant protein of human FGB
Formulation:	PBS with 0.09% Sodium azide, 50% glycerol, pH 7.3.
Concentration:	lot specific
Purification:	Affinity purification
Conjugation:	Unconjugated
Storage:	Store at -20°C as received.
Stability:	Stable for 12 months from date of receipt.
Gene Name:	fibrinogen beta chain
Database Link:	NP_005132 Entrez Gene 24366 Rat Entrez Gene 110135 Mouse Entrez Gene 2244 Human P02675

Background: The protein encoded by this gene is the beta component of fibrinogen, a blood-borne glycoprotein comprised of three pairs of nonidentical polypeptide chains. Following vascular injury, fibrinogen is cleaved by thrombin to form fibrin which is the most abundant component of blood clots. In addition, various cleavage products of fibrinogen and fibrin regulate cell adhesion and spreading, display vasoconstrictor and chemotactic activities, and are mitogens for several cell types. Mutations in this gene lead to several disorders, including afibrinogenemia, dysfibrinogenemia, hypodysfibrinogenemia and thrombotic tendency. [provided by RefSeq, Jul 2008]

Synonyms: HEL-S-78p

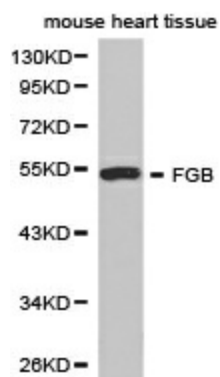
Protein Families: Druggable Genome, Secreted Protein



[View online »](#)

Protein Pathways: Complement and coagulation cascades

Product images:



Western blot analysis of extracts of mouse heart tissue cell lines, using FGB antibody.