

## Product datasheet for **TA327042**

### Fibrinogen beta chain (FGB) Rabbit Polyclonal Antibody

#### Product data:

Product Type:	Primary Antibodies
Applications:	ICC/IF, WB
Recommended Dilution:	WB 1:500 - 1:2000
Reactivity:	Human, Mouse, Rat
Host:	Rabbit
Isotype:	IgG
Clonality:	Polyclonal
Immunogen:	Recombinant protein of human FGB
Formulation:	Store at -20C or -80C. Avoid freeze / thaw cycles. Buffer: PBS with 0.02% sodium azide, 50% glycerol, pH7.3
Concentration:	lot specific
Purification:	Affinity purification
Conjugation:	Unconjugated
Storage:	Store at -20°C as received.
Stability:	Stable for 12 months from date of receipt.
Gene Name:	fibrinogen beta chain
Database Link:	<a href="#">NP_005132</a> <a href="#">Entrez Gene 24366 Rat</a> <a href="#">Entrez Gene 110135 Mouse</a> <a href="#">Entrez Gene 2244 Human</a> <a href="#">P02675</a>
Background:	The protein encoded by this gene is the beta component of fibrinogen, a blood-borne glycoprotein comprised of three pairs of nonidentical polypeptide chains. Following vascular injury, fibrinogen is cleaved by thrombin to form fibrin which is the most abundant component of blood clots. In addition, various cleavage products of fibrinogen and fibrin regulate cell adhesion and spreading, display vasoconstrictor and chemotactic activities, and are mitogens for several cell types. Mutations in this gene lead to several disorders, including afibrinogenemia, dysfibrinogenemia, hypodysfibrinogenemia and thrombotic tendency. [provided by RefSeq, Jul 2008]
Synonyms:	HEL-S-78p

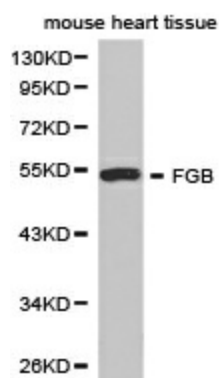


[View online »](#)

Protein Families: Druggable Genome, Secreted Protein

Protein Pathways: Complement and coagulation cascades

### Product images:



Western blot analysis of extracts of mouse heart tissue cell lines, using FGB antibody.