

## Product datasheet for **TA327040**

### MIF Rabbit Polyclonal Antibody

#### Product data:

Product Type:	Primary Antibodies
Applications:	WB
Recommended Dilution:	WB 1:500 - 1:2000
Reactivity:	Human, Mouse, Rat
Host:	Rabbit
Isotype:	IgG
Clonality:	Polyclonal
Immunogen:	Recombinant protein of human MIF
Formulation:	Store at -20C or -80C. Avoid freeze / thaw cycles. Buffer: PBS with 0.02% sodium azide, 50% glycerol, pH7.3
Concentration:	lot specific
Purification:	Affinity purification
Conjugation:	Unconjugated
Storage:	Store at -20°C as received.
Stability:	Stable for 12 months from date of receipt.
Predicted Protein Size:	12 kDa
Gene Name:	macrophage migration inhibitory factor (glycosylation-inhibiting factor)
Database Link:	<a href="#">NP_002406</a> <a href="#">Entrez Gene 17319 Mouse</a> <a href="#">Entrez Gene 81683 Rat</a> <a href="#">Entrez Gene 4282 Human</a> <a href="#">P14174</a>



[View online »](#)

**Background:**

Macrophage migration inhibitory factor, known as MIF or glycosylation-inhibiting factor, is a secreted, homotrimeric, pro-inflammatory cytokine that modulates macrophage and T cell function and is an important regulator of host response to infection. MIF is expressed at sites of inflammation, which suggests that it plays a role in regulating macrophage function in host defense. MIF is produced by the pituitary gland and is found in monocytes, macrophages, differentiating immunological cells in the eye lens and brain, and fibroblasts. Elevated levels of MIF protein are detected in the plasma of patients with severe sepsis or septic shock, a condition where MIF influences endotoxic shock by enhancing the production of other inflammatory cytokines including tumor necrosis factor  $\alpha$  (TNF $\alpha$ ), interleukin-1 (IL-1) and interferon- $\gamma$  (IFN- $\gamma$ ). MIF promotes the systemic inflammatory response by counter-regulating glucocorticoid-mediated inhibition of immune-cell activation and proinflammatory cytokine production. MIF may mediate tissue destruction through the induction of proteinases.

**Synonyms:**

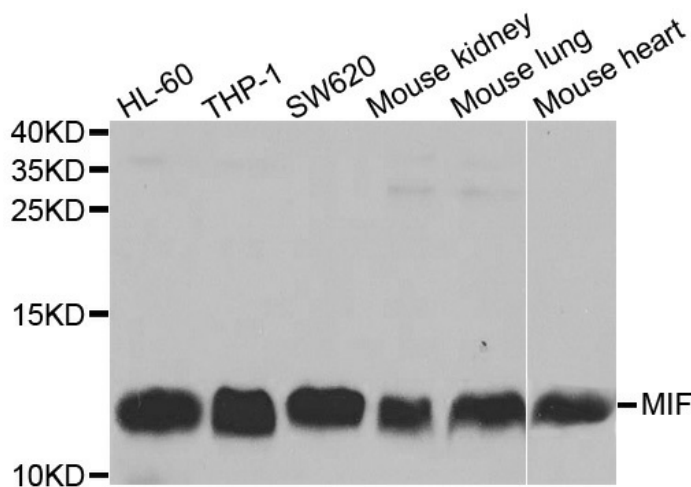
GIF; GLIF; MMIF

**Protein Families:**

Druggable Genome

**Protein Pathways:**

Phenylalanine metabolism, Tyrosine metabolism

**Product images:**

Western blot analysis of extracts of various cell lines, using MIF antibody.