

Product datasheet for **TA327039S**

CD32A (FCGR2A) Rabbit Polyclonal Antibody

Product data:

Product Type:	Primary Antibodies
Applications:	ICC/IF, WB
Recommended Dilution:	WB 1:500 - 1:2000;IF 1:50- 1:200
Reactivity:	Human, Mouse, Rat
Host:	Rabbit
Isotype:	IgG
Clonality:	Polyclonal
Immunogen:	Recombinant protein of human FCGR2A
Formulation:	Store at -20C or -80C. Avoid freeze / thaw cycles. Buffer: PBS with 0.02% sodium azide, 50% glycerol, pH7.3
Concentration:	lot specific
Purification:	Affinity purification
Conjugation:	Unconjugated
Storage:	Store at -20°C as received.
Stability:	Stable for 12 months from date of receipt.
Gene Name:	Fc fragment of IgG receptor IIa
Database Link:	NP_067674 Entrez Gene 2212 Human P12318

Background: CD32 (also designated Fc gamma RII) is a low affinity receptor for the Fc fragment of aggregated IgG. CD32 is responsible for the clearance of immunocomplexes by macrophages and also plays an important role in the regulation of antibody production by B cells . IgG can noncooperatively bind either one or two highly glycosylated CD32 molecules, and this binding delivers a negative signal for B cells. CD32 exists as several isoforms that are produced by alternative splicing of three distinct genes, A, B, and C . These isoforms are designated FcγRIIA, FcγRIIB1, FcγRIIB3, and FcγRIIC. All isoforms are present on monocytes, placental trophoblasts and endothelial cells. In addition, the FcγRIIB forms are present on B lymphocytes, and the FcγRIIA and FcγRIIC forms are found on neutrophils.



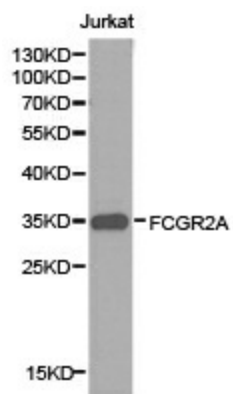
[View online »](#)

Synonyms: CD32; CD32A; CDw32; FCG2; FcGR; FCGR2; FCGR2A1; IGFR2

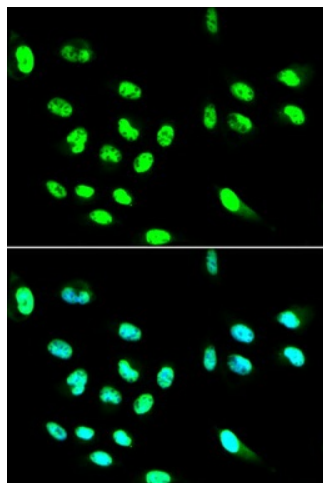
Protein Families: ES Cell Differentiation/IPS, Transmembrane

Protein Pathways: Fc gamma R-mediated phagocytosis, Systemic lupus erythematosus

Product images:



Western blot analysis of extracts of Jurkat cell lines, using FCGR2A antibody.



Immunofluorescence analysis of HepG2 cell using FCGR2A antibody. Blue: DAPI for nuclear staining.