

Product datasheet for **TA327038**

Osteopontin (SPP1) Rabbit Polyclonal Antibody

Product data:

Product Type:	Primary Antibodies
Applications:	WB
Recommended Dilution:	WB 1:500 - 1:2000
Reactivity:	Mouse, Human, Rat
Host:	Rabbit
Isotype:	IgG
Clonality:	Polyclonal
Immunogen:	Recombinant protein of human SPP1
Formulation:	Store at -20C or -80C. Avoid freeze / thaw cycles. Buffer: PBS with 0.02% sodium azide, 50% glycerol, pH7.3
Concentration:	lot specific
Purification:	Affinity purification
Conjugation:	Unconjugated
Storage:	Store at -20°C as received.
Stability:	Stable for 12 months from date of receipt.
Predicted Protein Size:	33 kDa
Gene Name:	secreted phosphoprotein 1
Database Link:	NP_000573 Entrez Gene 20750 Mouse Entrez Gene 25353 Rat Entrez Gene 6696 Human P10451



[View online »](#)

Background:

Osteopontin (OPN), also designated bone sialoprotein 1, urinary stone protein, spp-1, Eta-1, nephropontin and uropontin, is an extracellular matrix cell adhesion phosphoglycoprotein. OPN is deposited into unmineralized matrix prior to calcification leading to localization at various tissue interfaces including cement lines, lamina limitans and between collagen fibrils of fully matured hard tissues. While OPN is a major product of osteoblasts, it is also synthesized by brain and kidney cells. OPN isolated from or secreted by various tissues ranges in molecular weight due to posttranslational modifications. OPN functions as a substrate for transglutaminase and is involved in cell adhesion, chemoattraction and immunomodulation.

Synonyms:

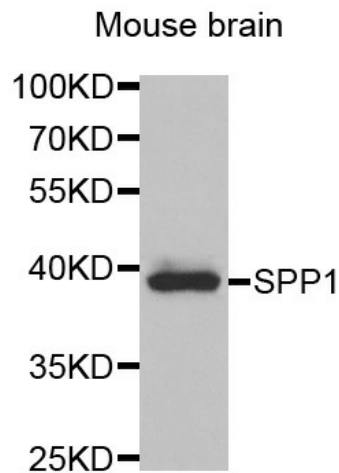
BNSP; BSPI; ETA-1; OPN

Protein Families:

Druggable Genome, Secreted Protein

Protein Pathways:

ECM-receptor interaction, Focal adhesion, Toll-like receptor signaling pathway

Product images:

Western blot analysis of extracts of Mouse brain tissue, using SPP1 antibody.