

Product datasheet for **TA327032**

BDNF Rabbit Polyclonal Antibody

Product data:

Product Type:	Primary Antibodies
Applications:	IHC, WB
Recommended Dilution:	WB 1:500 - 1:2000;IHC 1:50 - 1:200
Reactivity:	Human, Mouse, Rat
Host:	Rabbit
Isotype:	IgG
Clonality:	Polyclonal
Immunogen:	Recombinant protein of human BDNF
Formulation:	Store at -20C or -80C. Avoid freeze / thaw cycles. Buffer: PBS with 0.02% sodium azide, 50% glycerol, pH7.3
Concentration:	lot specific
Purification:	Affinity purification
Conjugation:	Unconjugated
Storage:	Store at -20°C as received.
Stability:	Stable for 12 months from date of receipt.
Gene Name:	brain-derived neurotrophic factor
Database Link:	NP_001700 Entrez Gene 12064 Mouse Entrez Gene 24225 Rat Entrez Gene 627 Human P23560



[View online »](#)

Background:

Neurotrophins function to regulate naturally occurring cell death of neurons during development. The prototype neurotrophin is nerve growth factor (NGF), originally discovered in the 1950s as a soluble peptide promoting the survival of, and neurite outgrowth from, sympathetic ganglia. Three additional structurally homologous neurotrophic factors have been identified. These include brain-derived neurotrophic factor (BDNF), neurotrophin-3 (NT-3) and neurotrophin-4 (NT-4) (also designated NT-5). These various neurotrophins stimulate the in vitro survival of distinct, but partially overlapping, populations of neurons. The cell surface receptors through which neurotrophins mediate their activity have been identified. For instance, the Trk A receptor is the preferential receptor for NGF, but also binds NT-3 and NT-4. The Trk B receptor binds both BDNF and NT-4 equally well, and binds NT-3 to a lesser extent, while the Trk C receptor only binds NT-3.

Synonyms:

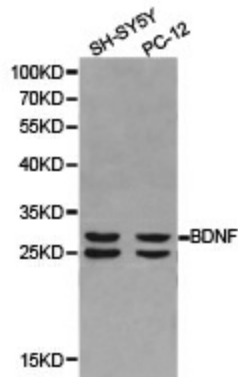
ANON2; BULN2

Protein Families:

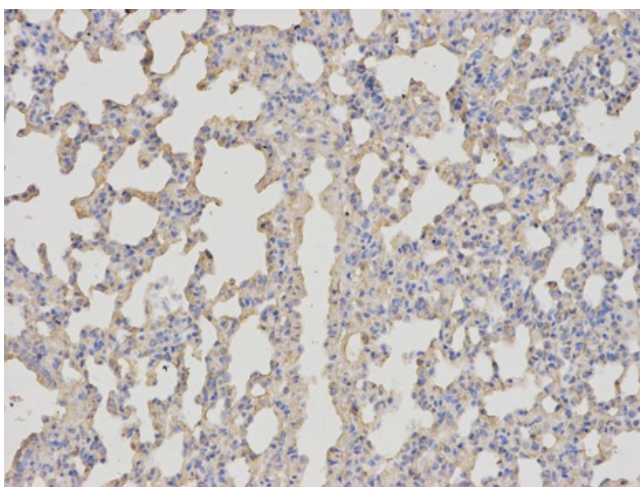
Adult stem cells, Druggable Genome, Embryonic stem cells, ES Cell Differentiation/IPS, Induced pluripotent stem cells, Secreted Protein, Transmembrane

Protein Pathways:

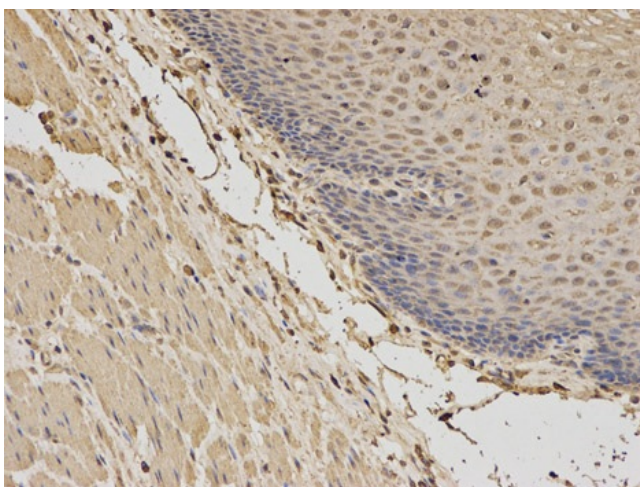
Huntington's disease, MAPK signaling pathway, Neurotrophin signaling pathway

Product images:

Western blot analysis of extracts of SH-SY5Y cell and PC-12 cell lines, using BDNF antibody.



Immunohistochemistry of paraffin-embedded rat lung using BDNF antibody at dilution of 1:100 (200x lens).



Immunohistochemistry of paraffin-embedded human esophagus using BDNF antibody at dilution of 1:100 (200x lens).