

## Product datasheet for **TA327029S**

### MITF Rabbit Polyclonal Antibody

#### Product data:

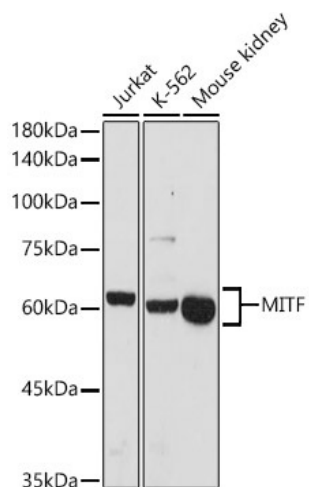
Product Type:	Primary Antibodies
Applications:	ELISA, WB
Recommended Dilution:	WB, 1:100 - 1:500 ELISA, Recommended starting concentration is 1 µg/mL. Please optimize the concentration based on your specific assay requirements.
Reactivity:	Human, Mouse
Host:	Rabbit
Isotype:	IgG
Clonality:	Polyclonal
Formulation:	Store at -20C or -80C. Avoid freeze / thaw cycles. Buffer: PBS with 0.02% sodium azide, 50% glycerol, pH7.3
Concentration:	lot specific
Purification:	Affinity purification
Conjugation:	Unconjugated
Storage:	Store at -20°C. Avoid freeze / thaw cycles.
Stability:	Stable for 12 months from date of receipt.
Predicted Protein Size:	59kDa
Gene Name:	melanogenesis associated transcription factor
Database Link:	<a href="#">NP_000239</a> <a href="#">Entrez Gene 17342 Mouse</a> <a href="#">Entrez Gene 4286 Human</a> <a href="#">O75030</a>
Background:	The protein encoded by this gene is a transcription factor that contains both basic helix-loop-helix and leucine zipper structural features. The encoded protein regulates melanocyte development and is responsible for pigment cell-specific transcription of the melanogenesis enzyme genes. Heterozygous mutations in the this gene cause auditory-pigmentary syndromes, such as Waardenburg syndrome type 2 and Tietz syndrome.
Synonyms:	bHLHe32; CMM8; MI; WS2; WS2A
Protein Families:	Druggable Genome, Transcription Factors



[View online »](#)

**Protein Pathways:** Melanogenesis, Melanoma, Pathways in cancer

**Product images:**



Western blot analysis of various lysates using MITF Rabbit pAb (TA327029S) at 1:500 dilution. Secondary antibody: HRP-conjugated Goat anti-Rabbit IgG (H+L) (AS014) at 1:10000 dilution. Lysates/proteins: 25µg per lane. Blocking buffer: 3% nonfat dry milk in TBST. Detection: ECL Basic Kit (RM00020). Exposure time: 180s.