

## Product datasheet for **TA327028**

### Tyrosinase (TYR) Rabbit Polyclonal Antibody

#### Product data:

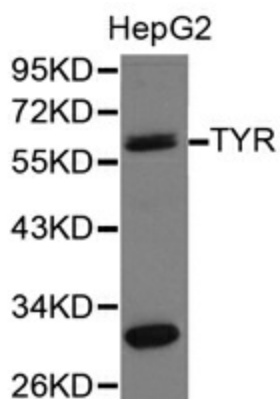
Product Type:	Primary Antibodies
Applications:	IHC, WB
Recommended Dilution:	WB 1:500 - 1:2000
Reactivity:	Human, Mouse, Rat
Host:	Rabbit
Isotype:	IgG
Clonality:	Polyclonal
Immunogen:	Recombinant protein of human TYR
Formulation:	Store at -20C or -80C. Avoid freeze / thaw cycles. Buffer: PBS with 0.02% sodium azide, 50% glycerol, pH7.3
Concentration:	lot specific
Purification:	Affinity purification
Conjugation:	Unconjugated
Storage:	Store at -20°C as received.
Stability:	Stable for 12 months from date of receipt.
Gene Name:	tyrosinase
Database Link:	<a href="#">NP_000363</a> <a href="#">Entrez Gene 22173 Mouse</a> <a href="#">Entrez Gene 308800 Rat</a> <a href="#">Entrez Gene 7299 Human</a> <a href="#">P14679</a>
Background:	The enzyme encoded by this gene catalyzes the first 2 steps, and at least 1 subsequent step, in the conversion of tyrosine to melanin. The enzyme has both tyrosine hydroxylase and dopa oxidase catalytic activities, and requires copper for function. Mutations in this gene result in oculocutaneous albinism, and nonpathologic polymorphisms result in skin pigmentation variation. The human genome contains a pseudogene similar to the 3 half of this gene. [provided by RefSeq, Oct 2008]
Synonyms:	ATN; CMM8; OCA1; OCA1A; OCAIA; SHEP3
Protein Families:	Transmembrane



[View online »](#)

Protein Pathways: Melanogenesis, Metabolic pathways, Riboflavin metabolism, Tyrosine metabolism

**Product images:**



Western blot analysis of HepG2 cell lysate using TYR antibody.