

Product datasheet for **TA327023**

Nrf2 (NFE2L2) Rabbit Polyclonal Antibody

Product data:

Product Type:	Primary Antibodies
Applications:	IHC, WB
Recommended Dilution:	WB 1:500 - 1:2000
Reactivity:	Human, Mouse, Rat
Host:	Rabbit
Isotype:	IgG
Clonality:	Polyclonal
Immunogen:	Recombinant protein of human NFE2L2
Formulation:	Store at -20C or -80C. Avoid freeze / thaw cycles. Buffer: PBS with 0.02% sodium azide, 50% glycerol, pH7.3
Concentration:	lot specific
Purification:	Affinity purification
Conjugation:	Unconjugated
Storage:	Store at -20°C as received.
Stability:	Stable for 12 months from date of receipt.
Gene Name:	nuclear factor, erythroid 2 like 2
Database Link:	NP_006155 Entrez Gene 18024 Mouse Entrez Gene 83619 Rat Entrez Gene 4780 Human Q16236



[View online »](#)

Background:

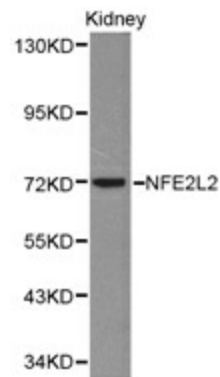
The nuclear factor-like 2 (NRF2) transcriptional activator binds antioxidant response elements (ARE) of target gene promoter regions to regulate expression of oxidative stress response genes. Under basal conditions, the NRF2 inhibitor INrf2 (also called KEAP1) binds and retains NRF2 in the cytoplasm where it can be targeted for ubiquitin-mediated degradation. Small amounts of constitutive nuclear NRF2 maintains cellular homeostasis through regulation of basal expression of antioxidant response genes. Following oxidative or electrophilic stress, KEAP1 releases NRF2, thereby allowing the activator to translocate to the nucleus and bind to ARE-containing genes. The coordinated action of NRF2 and other transcription factors mediates the response to oxidative stress. Altered expression of NRF2 is associated with chronic obstructive pulmonary disease (COPD). NRF2 activity in lung cancer cell lines directly correlates with cell proliferation rates, and inhibition of NRF2 expression by siRNA enhances anti-cancer drug-induced apoptosis.

Synonyms:

NRF2

Protein Families:

Transcription Factors

Product images:

Western blot analysis of kidney cell lysate using NFE2L2 antibody.