

## Product datasheet for **TA327019**

### **hCG (CGA) Rabbit Polyclonal Antibody**

#### **Product data:**

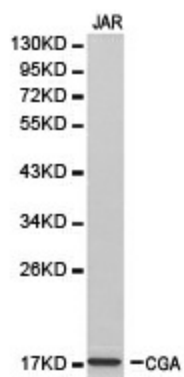
<b>Product Type:</b>	Primary Antibodies
<b>Applications:</b>	WB
<b>Recommended Dilution:</b>	WB 1:500 - 1:2000
<b>Reactivity:</b>	Human
<b>Host:</b>	Rabbit
<b>Isotype:</b>	IgG
<b>Clonality:</b>	Polyclonal
<b>Immunogen:</b>	Recombinant protein of human CGA
<b>Formulation:</b>	Store at -20C or -80C. Avoid freeze / thaw cycles. Buffer: PBS with 0.02% sodium azide, 50% glycerol, pH7.3
<b>Concentration:</b>	lot specific
<b>Purification:</b>	Affinity purification
<b>Conjugation:</b>	Unconjugated
<b>Storage:</b>	Store at -20°C as received.
<b>Stability:</b>	Stable for 12 months from date of receipt.
<b>Gene Name:</b>	glycoprotein hormones, alpha polypeptide
<b>Database Link:</b>	<a href="#">NP_000726</a> <a href="#">Entrez Gene 1081 Human P01215</a>
<b>Background:</b>	The four human glycoprotein hormones chorionic gonadotropin (CG), luteinizing hormone (LH), follicle stimulating hormone (FSH), and thyroid stimulating hormone (TSH) are dimers consisting of alpha and beta subunits that are associated noncovalently. The alpha subunits of these hormones are identical, however, their beta chains are unique and confer biological specificity. The protein encoded by this gene is the alpha subunit and belongs to the glycoprotein hormones alpha chain family. Two transcript variants encoding different isoforms have been found for this gene.
<b>Synonyms:</b>	CG-ALPHA; FSHA; GPHa; GPHA1; HCG; LHA; TSHA
<b>Protein Families:</b>	Druggable Genome, ES Cell Differentiation/IPS, Secreted Protein



[View online »](#)

**Protein Pathways:** Autoimmune thyroid disease, GnRH signaling pathway, Neuroactive ligand-receptor interaction

**Product images:**



Western blot analysis of JAR cell lysate using CGA antibody.