

Product datasheet for **TA327007S**

Selenium Binding Protein 1 (SELENBP1) Rabbit Polyclonal Antibody

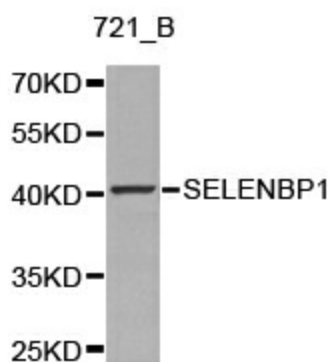
Product data:

Product Type:	Primary Antibodies
Applications:	ICC/IF, WB
Recommended Dilution:	WB 1:500 - 1:2000;IF 1:50- 1:200
Reactivity:	Human, Mouse
Host:	Rabbit
Isotype:	IgG
Clonality:	Polyclonal
Immunogen:	Recombinant protein of human SELENBP1
Formulation:	Store at -20C or -80C. Avoid freeze / thaw cycles. Buffer: PBS with 0.02% sodium azide, 50% glycerol, pH7.3
Concentration:	lot specific
Purification:	Affinity purification
Conjugation:	Unconjugated
Storage:	Store at -20°C as received.
Stability:	Stable for 12 months from date of receipt.
Gene Name:	selenium binding protein 1
Database Link:	NP_003935 Entrez Gene 20341 Mouse Entrez Gene 8991 Human Q13228
Background:	This gene encodes a member of the selenium-binding protein family. Selenium is an essential nutrient that exhibits potent anticarcinogenic properties, and deficiency of selenium may cause certain neurologic diseases. The effects of selenium in preventing cancer and neurologic diseases may be mediated by selenium-binding proteins, and decreased expression of this gene may be associated with several types of cancer. The encoded protein may play a selenium-dependent role in ubiquitination/deubiquitination-mediated protein degradation. Alternatively spliced transcript variants encoding multiple isoforms have been observed for this gene.
Synonyms:	HEL-S-134P; hSBP; LPSB; SBP56; SP56

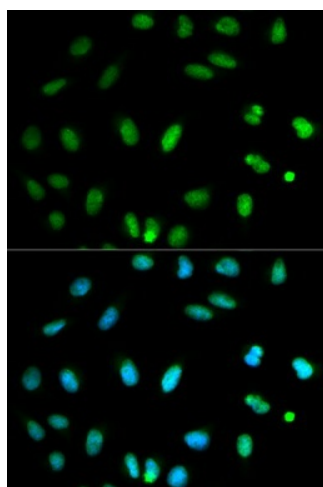


[View online »](#)

Product images:



Western blot analysis of 721_B cell lysate using SELENBP1 antibody.



Immunofluorescence analysis of HeLa cell using SELENBP1 antibody. Blue: DAPI for nuclear staining.