

## Product datasheet for **TA327005**

### STIP1 Rabbit Polyclonal Antibody

#### Product data:

Product Type:	Primary Antibodies
Applications:	IF, IHC, WB
Recommended Dilution:	WB 1:500 - 1:2000;IHC 1:50 - 1:200
Reactivity:	Human, Mouse, Rat, Monkey
Host:	Rabbit
Isotype:	IgG
Clonality:	Polyclonal
Immunogen:	Recombinant protein of human STIP1
Formulation:	Store at -20C or -80C. Avoid freeze / thaw cycles. Buffer: PBS with 0.02% sodium azide, 50% glycerol, pH7.3
Concentration:	lot specific
Purification:	Affinity purification
Conjugation:	Unconjugated
Storage:	Store at -20°C as received.
Stability:	Stable for 12 months from date of receipt.
Predicted Protein Size:	63 kDa
Gene Name:	stress induced phosphoprotein 1
Database Link:	<a href="#">NP_006810</a> <a href="#">Entrez Gene 20867 MouseEntrez Gene 192277 RatEntrez Gene 717926 MonkeyEntrez Gene 10963 Human</a> <a href="#">P31948</a>
Background:	HOP, also known as stress-induced phospho protein 1 (STIP), is a co-chaperone to the major heat shock proteins, Hsp70 and Hsp90, and appears in early receptor complexes. Through mutual binding to both Hsp70 and Hsp90, Hop functions as an adaptor that can integrate Hsp70 and Hsp90 interactions. HOP is an abundant and highly conserved protein which is composed of three tetratricopeptide repeat (TPR) domains (TPR1, TPR2a and TPR2b) and two DP repeat domains (DP1 and DP2), whose function has not been fully resolved.
Synonyms:	HEL-S-94n; HOP; IEF-SSP-3521; P60; STI1; STI1L

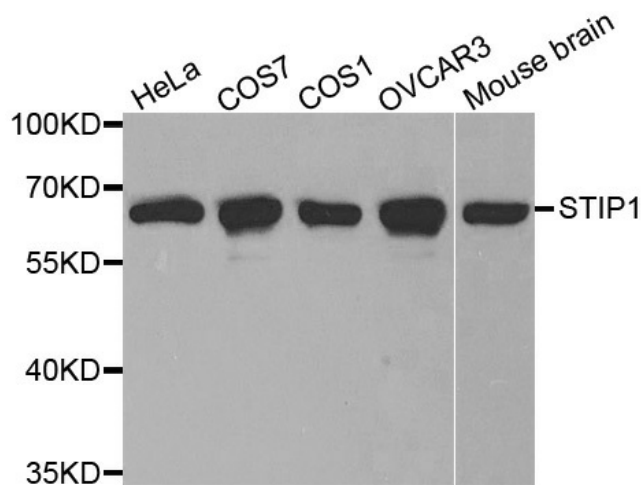


[View online »](#)

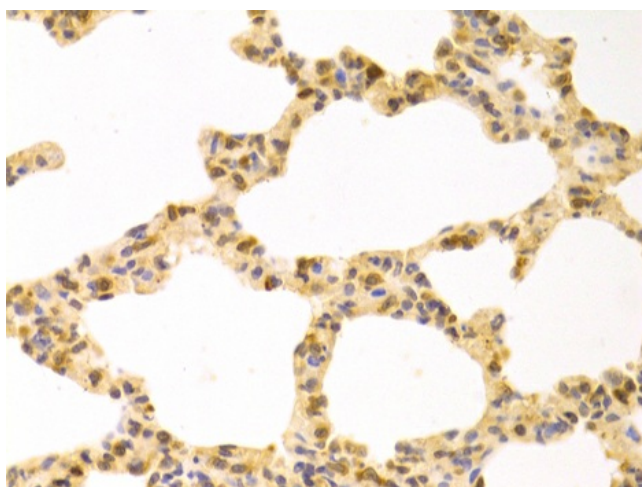
Protein Families: Stem cell - Pluripotency

Protein Pathways: Prion diseases

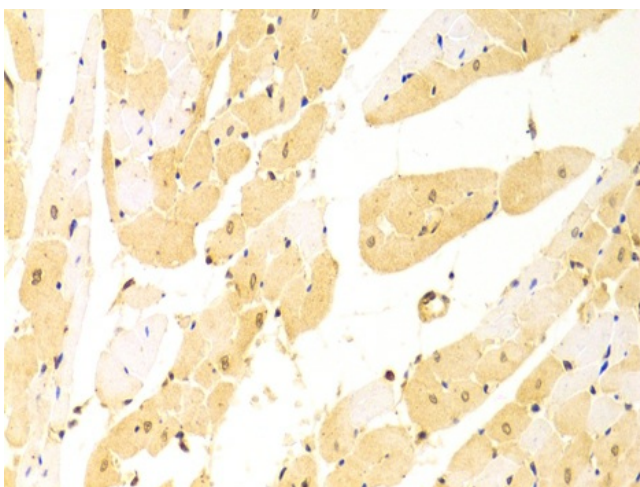
### Product images:



Western blot analysis of extracts of various cell lines, using STIP1 antibody.



Immunohistochemistry of paraffin-embedded rat lung using STIP1 antibody at dilution of 1:100 (x400 lens).



Immunohistochemistry of paraffin-embedded rat heart using STIP1 antibody at dilution of 1:100 (x400 lens).