

Product datasheet for **TA327002**

SHMT2 Rabbit Polyclonal Antibody

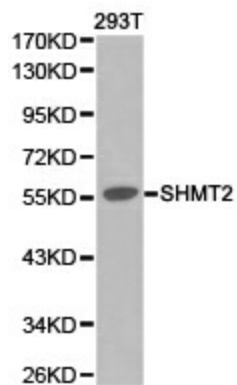
Product data:

Product Type:	Primary Antibodies
Applications:	WB
Recommended Dilution:	WB 1:500 - 1:2000
Reactivity:	Human
Host:	Rabbit
Isotype:	IgG
Clonality:	Polyclonal
Immunogen:	Recombinant protein of human SHMT2
Formulation:	Store at -20C or -80C. Avoid freeze / thaw cycles. Buffer: PBS with 0.02% sodium azide, 50% glycerol, pH7.3
Concentration:	lot specific
Purification:	Affinity purification
Conjugation:	Unconjugated
Storage:	Store at -20°C as received.
Stability:	Stable for 12 months from date of receipt.
Gene Name:	serine hydroxymethyltransferase 2
Database Link:	NP_005403 Entrez Gene 6472 Human P34897
Background:	This gene encodes the mitochondrial form of a pyridoxal phosphate-dependent enzyme that catalyzes the reversible reaction of serine and tetrahydrofolate to glycine and 5,10-methylene tetrahydrofolate. The encoded product is primarily responsible for glycine synthesis. The activity of the encoded protein has been suggested to be the primary source of intracellular glycine. The gene which encodes the cytosolic form of this enzyme is located on chromosome 17. Alternative splicing results in multiple transcript variants.
Synonyms:	GLYA; HEL-S-51e; SHMT
Protein Pathways:	Cyanoamino acid metabolism, Glycine, serine and threonine metabolism, Metabolic pathways, Methane metabolism, One carbon pool by folate



[View online »](#)

Product images:



Western blot analysis of 293T cell lysate using SHMT2 antibody.