

## Product datasheet for **TA327001**

### RhoGDI (ARHGDI) Rabbit Polyclonal Antibody

#### Product data:

Product Type:	Primary Antibodies
Applications:	ICC/IF, WB
Recommended Dilution:	WB 1:500 - 1:2000;IF 1:50- 1:200
Reactivity:	Human, Mouse, Rat
Host:	Rabbit
Isotype:	IgG
Clonality:	Polyclonal
Immunogen:	Recombinant protein of human ARHGDI
Formulation:	Store at -20C or -80C. Avoid freeze / thaw cycles. Buffer: PBS with 0.02% sodium azide, 50% glycerol, pH7.3
Concentration:	lot specific
Purification:	Affinity purification
Conjugation:	Unconjugated
Storage:	Store at -20°C as received.
Stability:	Stable for 12 months from date of receipt.
Gene Name:	Rho GDP dissociation inhibitor alpha
Database Link:	<a href="#">NP_004300</a> <a href="#">Entrez Gene 192662 Mouse</a> <a href="#">Entrez Gene 360678 Rat</a> <a href="#">Entrez Gene 396 Human</a> <a href="#">P52565</a>



[View online »](#)

**Background:**

Rho family small GTPases, including Rho, Rac and cdc42, act as molecular switches, regulating processes such as cell migration, adhesion, proliferation and differentiation. They are activated by guanine nucleotide exchange factors (GEFs), which catalyze the exchange of bound GDP for GTP, and inhibited by GTPase activating proteins (GAPs), which catalyze the hydrolysis of GTP to GDP. A third level of regulation is provided by the stoichiometric binding of Rho GDP dissociation inhibitor (RhoGDI). RhoGDI affects Rho activity by inhibiting nucleotide exchange and membrane association, regulating activity and localization. The inhibitory and shuttling functions of RhoGDI have been uncoupled using mutant forms of RhoGDI. Phosphorylation of GDIs and/or GTPases can modulate their affinity for each other and, therefore, GTPase mediated signaling. PAK1 phosphorylation of RhoGDI at serines 101 and 174 causes release and activation of Rac1, but not RhoA.

**Synonyms:**

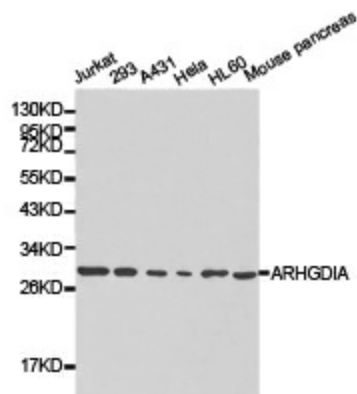
GDIA1; HEL-S-47e; NPHS8; RHOGDI; RHOGDI-1

**Protein Families:**

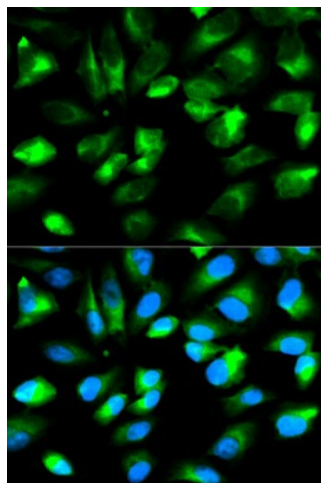
Druggable Genome

**Protein Pathways:**

Neurotrophin signaling pathway

**Product images:**


Western blot analysis of extracts of various cell lines, using ARHGDI antibody.



Immunofluorescence analysis of HeLa cell using ARHGDI antibody. Blue: DAPI for nuclear staining.