

## Product datasheet for **TA326995**

### Tropomyosin 3 (TPM3) Rabbit Polyclonal Antibody

#### Product data:

Product Type:	Primary Antibodies
Applications:	ICC/IF, WB
Recommended Dilution:	WB 1:500 - 1:2000;IF 1:50- 1:200
Reactivity:	Human, Mouse, Rat
Host:	Rabbit
Isotype:	IgG
Clonality:	Polyclonal
Immunogen:	Recombinant protein of human TPM3
Formulation:	Store at -20C or -80C. Avoid freeze / thaw cycles. Buffer: PBS with 0.02% sodium azide, 50% glycerol, pH7.3
Concentration:	lot specific
Purification:	Affinity purification
Conjugation:	Unconjugated
Storage:	Store at -20°C as received.
Stability:	Stable for 12 months from date of receipt.
Gene Name:	tropomyosin 3
Database Link:	<a href="#">NP_689476</a> <a href="#">Entrez Gene 59069 Mouse</a> <a href="#">Entrez Gene 117557 Rat</a> <a href="#">Entrez Gene 7170 Human</a> <a href="#">P06753</a>

**Background:** This gene encodes a member of the tropomyosin family of actin-binding proteins involved in the contractile system of striated and smooth muscles and the cytoskeleton of non-muscle cells. Tropomyosins are dimers of coiled-coil proteins that polymerize end-to-end along the major groove in most actin filaments. They provide stability to the filaments and regulate access of other actin-binding proteins. In muscle cells, they regulate muscle contraction by controlling the binding of myosin heads to the actin filament. Mutations in this gene result in autosomal dominant nemaline myopathy, and oncogenes formed by chromosomal translocations involving this locus are associated with cancer. Multiple transcript variants encoding different isoforms have been found for this gene. [provided by RefSeq, Jul 2008]

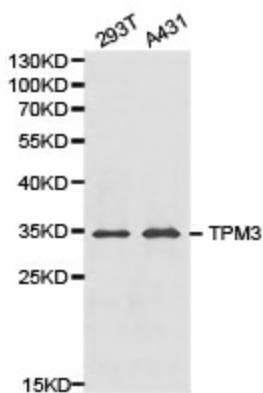


[View online »](#)

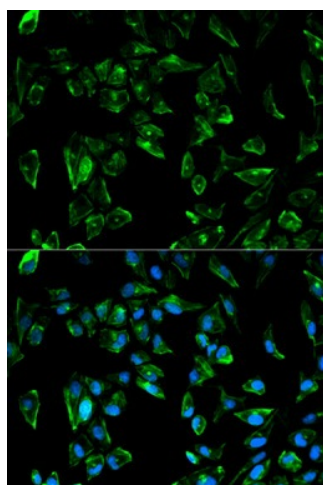
**Synonyms:** CAPM1; CFTD; HEL-189; HEL-S-82p; hscp30; NEM1; OK; SW-cl.5; TM-5; TM3; TM5; TM30; TM30nm; TPMsk3

**Protein Pathways:** Cardiac muscle contraction, Dilated cardiomyopathy, Hypertrophic cardiomyopathy (HCM), Pathways in cancer, Thyroid cancer

**Product images:**



Western blot analysis of 293T cell and A431 cell lysate using TPM3 antibody.



Immunofluorescence analysis of HeLa cell using TPM3 antibody. Blue: DAPI for nuclear staining.