

## Product datasheet for **TA326990S**

### Wilms Tumor Protein (WT1) Rabbit Polyclonal Antibody

#### Product data:

Product Type:	Primary Antibodies
Applications:	WB
Recommended Dilution:	WB 1:500 - 1:2000
Reactivity:	Human, Mouse, Rat
Host:	Rabbit
Isotype:	IgG
Clonality:	Polyclonal
Immunogen:	Recombinant protein of human WT1
Formulation:	Store at -20C or -80C. Avoid freeze / thaw cycles. Buffer: PBS with 0.02% sodium azide, 50% glycerol, pH7.3
Concentration:	lot specific
Purification:	Affinity purification
Conjugation:	Unconjugated
Storage:	Store at -20°C as received.
Stability:	Stable for 12 months from date of receipt.
Gene Name:	Wilms tumor 1
Database Link:	<a href="#">NP_000369</a> <a href="#">Entrez Gene 22431 Mouse</a> <a href="#">Entrez Gene 24883 Rat</a> <a href="#">Entrez Gene 7490 Human</a> <a href="#">P19544</a>



[View online »](#)

**Background:**

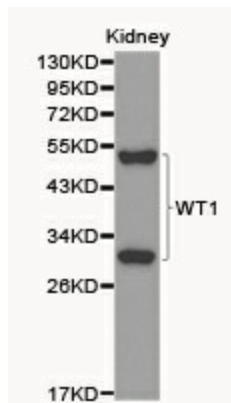
This gene encodes a transcription factor that contains four zinc-finger motifs at the C-terminus and a proline/glutamine-rich DNA-binding domain at the N-terminus. It has an essential role in the normal development of the urogenital system, and it is mutated in a small subset of patients with Wilms tumors. This gene exhibits complex tissue-specific and polymorphic imprinting pattern, with biallelic, and monoallelic expression from the maternal and paternal alleles in different tissues. Multiple transcript variants have been described. In several variants, there is evidence for the use of a non-AUG (CUG) translation initiation site upstream of and in-frame with the first AUG. Authors of PMID:7926762 also provide evidence that WT1 mRNA undergoes RNA editing in human and rat, and that this process is tissue-restricted and developmentally regulated. [provided by RefSeq, Oct 2010]

**Synonyms:**

AWT1; EWS-WT1; GUD; NPHS4; WAGR; WIT-2; WT33

**Protein Families:**

Druggable Genome, Transcription Factors

**Product images:**

Western blot analysis of kidney cell lysate using WT1 antibody.