

## Product datasheet for **TA326989**

### CD64 (FCGR1A) Rabbit Polyclonal Antibody

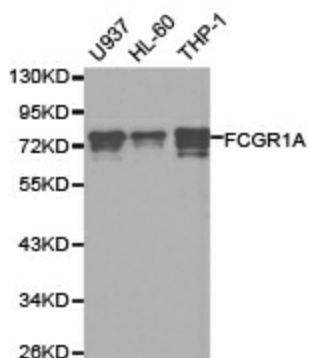
#### Product data:

Product Type:	Primary Antibodies
Applications:	ICC/IF, WB
Recommended Dilution:	WB 1:500 - 1:2000;IF 1:50- 1:200
Reactivity:	Human, Mouse, Rat
Host:	Rabbit
Isotype:	IgG
Clonality:	Polyclonal
Immunogen:	Recombinant protein of human FCGR1A
Formulation:	Store at -20C or -80C. Avoid freeze / thaw cycles. Buffer: PBS with 0.02% sodium azide, 50% glycerol, pH7.3
Concentration:	lot specific
Purification:	Affinity purification
Conjugation:	Unconjugated
Storage:	Store at -20°C as received.
Stability:	Stable for 12 months from date of receipt.
Gene Name:	Fc fragment of IgG receptor Ia
Database Link:	<a href="#">NP_000557</a> <a href="#">Entrez Gene 295279 Rat</a> <a href="#">Entrez Gene 2209 Human</a> <a href="#">P12314</a>
Background:	This gene encodes a protein that plays an important role in the immune response. This protein is a high-affinity Fc-gamma receptor. The gene is one of three related gene family members located on chromosome 1.
Synonyms:	CD64; CD64A; FCRI; IGFR1
Protein Families:	Transmembrane
Protein Pathways:	Fc gamma R-mediated phagocytosis, Hematopoietic cell lineage, Systemic lupus erythematosus

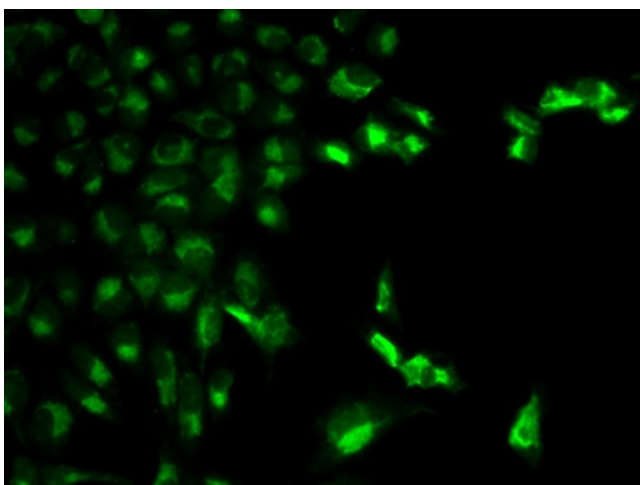


[View online »](#)

## Product images:



Western blot analysis of extracts of various cell lines, using FCGR1A antibody.



Immunofluorescence analysis of MCF-7 cell using FCGR1A antibody.