

Product datasheet for **TA326987S**

PDGF beta (PDGFB) Rabbit Polyclonal Antibody

Product data:

Product Type:	Primary Antibodies
Applications:	ICC/IF, IHC, WB
Recommended Dilution:	WB 1:500 - 1:2000
Reactivity:	Human, Rat
Host:	Rabbit
Isotype:	IgG
Clonality:	Polyclonal
Immunogen:	Recombinant protein of human PDGFB
Formulation:	Store at -20C or -80C. Avoid freeze / thaw cycles. Buffer: PBS with 0.02% sodium azide, 50% glycerol, pH7.3
Concentration:	lot specific
Purification:	Affinity purification
Conjugation:	Unconjugated
Storage:	Store at -20°C as received.
Stability:	Stable for 12 months from date of receipt.
Gene Name:	platelet derived growth factor subunit B
Database Link:	NP_002599 Entrez Gene 24628 Rat Entrez Gene 5155 Human P01127



[View online »](#)

Background:

PDGF-BB is a cystine-linked homodimer PDGF family member with key roles in development, cell proliferation, cell survival, and angiogenesis. PDGF-BB is expressed by vascular endothelium, megakaryocytes and Leydig cells. PDGF-BB targets pericytes, fibroblasts, monocytes and other cell types (1-3). PDGF induces fibroblast growth and migration and is a chemoattractant for monocytes and granulocytes. Precursor PDGF-BB is cleaved intracellularly to generate a form that contains a carboxy-terminal stretch that serves to retain PDGF-BB in the extracellular matrix. In a second cleavage event, the carboxy-terminal stretch is removed extracellularly to generate mature PDGF-BB. PDGF-BB binds to PDGFR β and induces receptor dimerization. Signaling is through the PI3K/Akt, JNK, and PLC β pathways. PDGF-BB may have a role in some cancer types.

Synonyms:

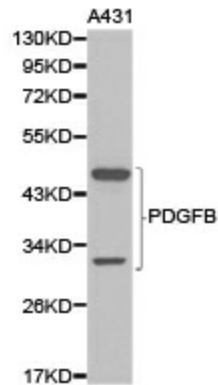
c-sis; IBGC5; PDGF-2; PDGF2; SIS; SSV

Protein Families:

Druggable Genome

Protein Pathways:

Cytokine-cytokine receptor interaction, Focal adhesion, Gap junction, Glioma, MAPK signaling pathway, Melanoma, Pathways in cancer, Prostate cancer, Regulation of actin cytoskeleton, Renal cell carcinoma

Product images:

Western blot analysis of extracts of A431 cell lines using PDGFB antibody.