

Product datasheet for **TA326981**

IKB alpha (NFKBIA) Rabbit Polyclonal Antibody

Product data:

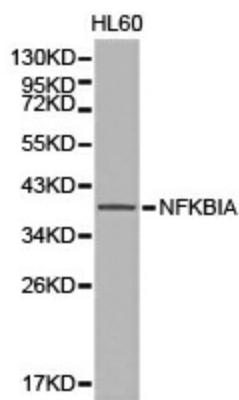
Product Type:	Primary Antibodies
Applications:	IF, IHC, WB
Recommended Dilution:	WB 1:500 - 1:2000;IHC 1:50- 1:200
Reactivity:	Human, Mouse, Rat
Host:	Rabbit
Isotype:	IgG
Clonality:	Polyclonal
Immunogen:	Recombinant protein of human NFKBIA
Formulation:	Store at -20C or -80C. Avoid freeze / thaw cycles. Buffer: PBS with 0.02% sodium azide, 50% glycerol, pH7.3
Concentration:	lot specific
Purification:	Affinity purification
Conjugation:	Unconjugated
Storage:	Store at -20°C as received.
Stability:	Stable for 12 months from date of receipt.
Gene Name:	NFKB inhibitor alpha
Database Link:	NP_065390 Entrez Gene 18035 Mouse Entrez Gene 25493 Rat Entrez Gene 4792 Human P25963
Background:	The NF- κ B/Rel transcription factors are present in the cytosol in an inactive state complexed with the inhibitory I κ B proteins. Activation occurs via phosphorylation of I κ Ba at Ser32 and Ser36 followed by proteasome-mediated degradation that results in the release and nuclear translocation of active NF- κ B. I κ Ba phosphorylation and resulting Rel-dependent transcription are activated by a highly diverse group of extracellular signals including inflammatory cytokines, growth factors, and chemokines. Kinases that phosphorylate I κ B at these activating sites have been identified.
Synonyms:	IKBA; MAD-3; NFKBI
Protein Families:	Druggable Genome



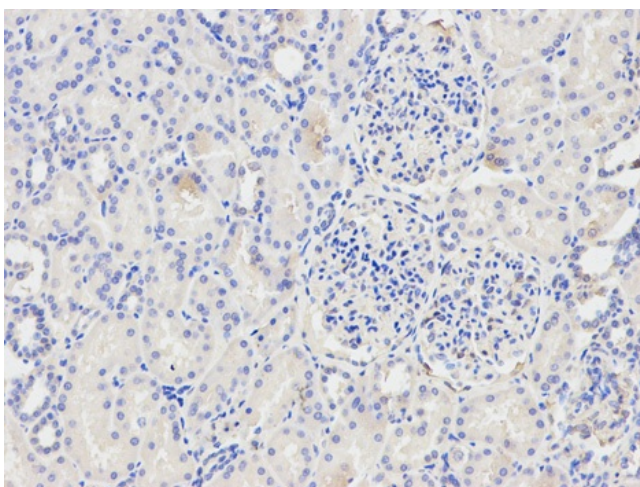
[View online »](#)

Protein Pathways:

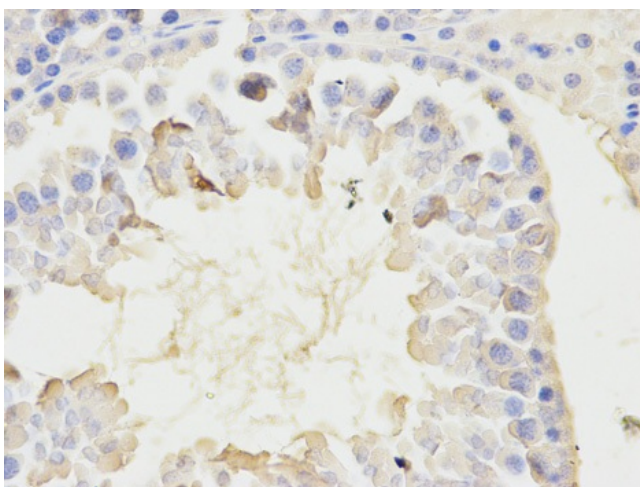
Adipocytokine signaling pathway, Apoptosis, B cell receptor signaling pathway, Chemokine signaling pathway, Chronic myeloid leukemia, Cytosolic DNA-sensing pathway, Epithelial cell signaling in Helicobacter pylori infection, Neurotrophin signaling pathway, NOD-like receptor signaling pathway, Pathways in cancer, Prostate cancer, RIG-I-like receptor signaling pathway, Small cell lung cancer, T cell receptor signaling pathway, Toll-like receptor signaling pathway

Product images:

Western blot analysis of HL60 cell lysate using NFKBIA antibody.



Immunohistochemistry of paraffin-embedded human kidney using NFKBIA antibody at dilution of 1:200 (200x lens).



Immunohistochemistry of paraffin-embedded rat testis using NFKBIA antibody at dilution of 1:200 (400x lens).