

## Product datasheet for **TA326977S**

### Rab5 (RAB5A) Rabbit Polyclonal Antibody

#### Product data:

Product Type:	Primary Antibodies
Applications:	ICC/IF, IHC, WB
Recommended Dilution:	WB 1:500 - 1:2000;IF 1:50- 1:200
Reactivity:	Human, Mouse, Rat
Host:	Rabbit
Isotype:	IgG
Clonality:	Polyclonal
Immunogen:	Recombinant protein of human RAB5A
Formulation:	Store at -20C or -80C. Avoid freeze / thaw cycles. Buffer: PBS with 0.02% sodium azide, 50% glycerol, pH7.3
Concentration:	lot specific
Purification:	Affinity purification
Conjugation:	Unconjugated
Storage:	Store at -20°C as received.
Stability:	Stable for 12 months from date of receipt.
Gene Name:	RAB5A, member RAS oncogene family
Database Link:	<a href="#">NP_004153</a> <a href="#">Entrez Gene 64633 Rat</a> <a href="#">Entrez Gene 271457 Mouse</a> <a href="#">Entrez Gene 5868 Human</a> <a href="#">P20339</a>
Background:	Rab5 is a member of the Ras superfamily of small Rab GTPases. Rab5 is localized at the plasma membrane and early endosomes and functions as a key regulator of vesicular trafficking during early endocytosis. The conformational change between Rab5 GTP/GDP states is essential for its biological function as a rate limiting regulator at multiple steps during endocytosis. Rab5 exerts its function by interacting with several Rab5-specific effectors. These proteins form complexes with Rab5 on a specialized Rab domain of the endosome and promote recycling of Rab5-cargo targets between endosome and the plasma membrane.
Synonyms:	RAB5

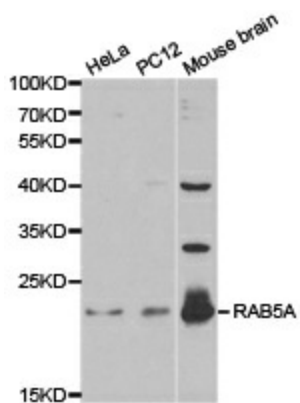


[View online »](#)

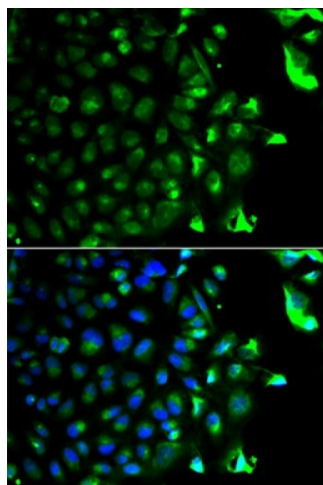
**Protein Families:** Druggable Genome

**Protein Pathways:** Amyotrophic lateral sclerosis (ALS), Endocytosis

**Product images:**



Western blot analysis of extracts of various cell lines, using RAB5A antibody.



Immunofluorescence analysis of HeLa cell using RAB5A antibody. Blue: DAPI for nuclear staining.