

Product datasheet for **TA326976S**

MASPIN (SERPINB5) Rabbit Polyclonal Antibody

Product data:

| | |
|-------------------------|---|
| Product Type: | Primary Antibodies |
| Applications: | ELISA, IHC, WB |
| Recommended Dilution: | WB, 1:500 - 1:1000 IHC-P, 1:50 - 1:200 ELISA, Recommended starting concentration is 1 µg/mL. Please optimize the concentration based on your specific assay requirements. |
| Reactivity: | Human, Mouse |
| Host: | Rabbit |
| Isotype: | IgG |
| Clonality: | Polyclonal |
| Formulation: | Store at -20C or -80C. Avoid freeze / thaw cycles. Buffer: PBS with 0.02% sodium azide, 50% glycerol, pH7.3 |
| Concentration: | lot specific |
| Purification: | Affinity purification |
| Conjugation: | Unconjugated |
| Storage: | Store at -20°C. Avoid freeze / thaw cycles. |
| Stability: | Stable for 12 months from date of receipt. |
| Predicted Protein Size: | 42kDa |
| Gene Name: | serpin family B member 5 |
| Database Link: | NP_002630 Entrez Gene 20724 Mouse Entrez Gene 5268 Human P36952 |
| Background: | Predicted to enable serine-type endopeptidase inhibitor activity. Predicted to be involved in negative regulation of endopeptidase activity. Predicted to act upstream of or within several processes, including extracellular matrix organization; prostate gland morphogenesis; and regulation of epithelial cell proliferation. Located in cytoplasm. Biomarker of hepatocellular carcinoma. |
| Synonyms: | maspin; PI5 |

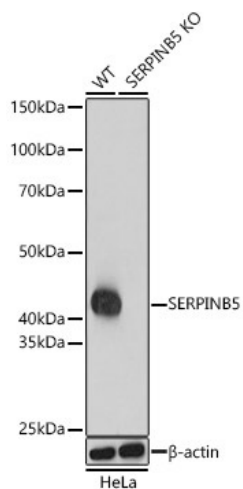


[View online »](#)

Protein Families: Druggable Genome, Secreted Protein

Protein Pathways: p53 signaling pathway

Product images:



Western blot analysis of various lysates using SERPINB5 Rabbit pAb ([TA326976]) at 1:1000 dilution.

Secondary antibody: HRP-conjugated Goat anti-Rabbit IgG (H+L) (AS014) at 1:10000 dilution.

Lysates/proteins: 25µg per lane.

Blocking buffer: 3% nonfat dry milk in TBST.