

Name: SERPINB5 Rabbit Polyclonal Antibody
Product Data Sheet - ANTIBODY**Catalog: TA326976**

Components:	• SERPINB5 Rabbit Polyclonal Antibody (TA326976)
Amount:	100ug
Immunogen:	Recombinant protein of human SERPINB5
Host:	Rabbit
Isotype:	IgG
Species Reactivity:	Human, Mouse, Rat
Guaranteed Applications:	WB
Suggested Dilutions:	WB: 1:500-1:2000; IHC: 1:50-1:200
Concentration:	1mg/ml
Buffer:	Store at -20C or -80C. Avoid freeze / thaw cycles. Buffer: PBS with 0.02% sodium azide, 50% glycerol, pH7.3
Purification:	Affinity purification
Storage Condition:	Shipped at -20C or with ice packs. Upon delivery store at -20C. Dilute in PBS (pH7.3) if necessary. Stable for 12 months from date of receipt. Avoid repeated freeze-thaws.

Target

Target Name:	serpin family B member 5
Alternative Name:	PI5 maspin
Database Link:	NP_002630 Entrez Gene 5268 Human Entrez Gene 20724 Mouse Entrez Gene 116589 Rat
Function:	Maspin (SERPINB5) was discovered as a mammary tumor suppressor that is expressed in normal mammary epithelium but lost in most breast cancer cell lines. While maspin is related to the serpin family of serine protease inhibitors, it may not function as a protease inhibitor. It plays an essential role in embryonic development through critical roles in cell adhesion. While the precise mechanism of maspin signaling is unclear, the tumor suppressing activity of maspin has been attributed to its ability to inhibit cell invasion/metastasis and angiogenesis, while promoting apoptosis. Nuclear translocation of active

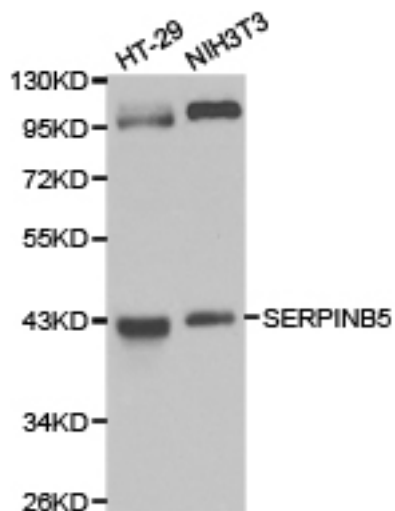
This product is to be used for laboratory only. Not for diagnostic or therapeutic use.

IKKa has been shown to repress maspin transcription and promote prostate cancer metastasis.

This product is to be used for laboratory only. Not for diagnostic or therapeutic use.

© 2017 OriGene Technologies, Inc. 9620 Medical Center Dr., Suite 200, Rockville, MD 20850

Validation Data



Western blot analysis of HT-29 cell and NIH3T3 cell lysate using SERPINB5 antibody.

* More validation images may be available on our website: <http://www.origene.com/antibody/TA326976.aspx>

This product is to be used for laboratory only. Not for diagnostic or therapeutic use.

© 2017 OriGene Technologies, Inc. 9620 Medical Center Dr., Suite 200, Rockville, MD 20850
