

## Product datasheet for **TA326968**

### TMS1 (PYCARD) Rabbit Polyclonal Antibody

#### Product data:

Product Type:	Primary Antibodies
Applications:	ICC/IF, WB
Recommended Dilution:	WB 1:500 - 1:2000;IF 1:50- 1:200
Reactivity:	Human, Rat, Mouse
Host:	Rabbit
Isotype:	IgG
Clonality:	Polyclonal
Immunogen:	Recombinant protein of human PYCARD
Formulation:	Store at -20C or -80C. Avoid freeze / thaw cycles. Buffer: PBS with 0.02% sodium azide, 50% glycerol, pH7.3
Concentration:	lot specific
Purification:	Affinity purification
Conjugation:	Unconjugated
Storage:	Store at -20°C as received.
Stability:	Stable for 12 months from date of receipt.
Gene Name:	PYD and CARD domain containing
Database Link:	<a href="#">NP_037390</a> <a href="#">Entrez Gene 66824 Mouse</a> <a href="#">Entrez Gene 282817 Rat</a> <a href="#">Entrez Gene 29108 Human</a> <a href="#">Q9ULZ3</a>



[View online »](#)

**Background:**

TMS1 (target of methylation-induced silencing)/ASC (apoptosis-associated speck-like protein containing a CARD), also referred to as PYCARD and CARD5, is a 22-kDa pro-apoptotic protein containing an N-terminal pyrin domain (PYD) and a C-terminal caspase recruitment domain (CARD). The TMS1 gene was originally found to be aberrantly methylated and silenced in breast cancer cells, and has since been found to be silenced in a number of other cancers, including ovarian cancer, glioblastoma, melanoma, gastric cancer, lung cancer, and prostate cancer. Expression of TMS1 can be induced by pro-apoptotic/inflammatory stimuli. During apoptosis TMS1 is re-distributed from the cytosol to the mitochondria and associates with mitochondrial Bax to trigger cytochrome c release and subsequent apoptosis. TMS1 has also been found to be a critical component of inflammatory signaling where it associates with and activates caspase-1 in response to pro-inflammatory signals.

**Synonyms:**

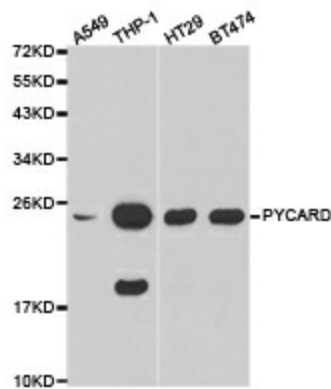
ASC; CARD5; TMS; TMS-1; TMS1

**Protein Families:**

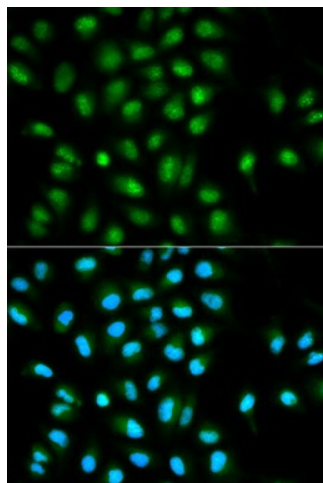
Druggable Genome

**Protein Pathways:**

Cytosolic DNA-sensing pathway, NOD-like receptor signaling pathway

**Product images:**

Western blot analysis of extracts of various cell lines, using PYCARD antibody.



Immunofluorescence analysis of HeLa cell using PYCARD antibody. Blue: DAPI for nuclear staining.