

Product datasheet for **TA326962**

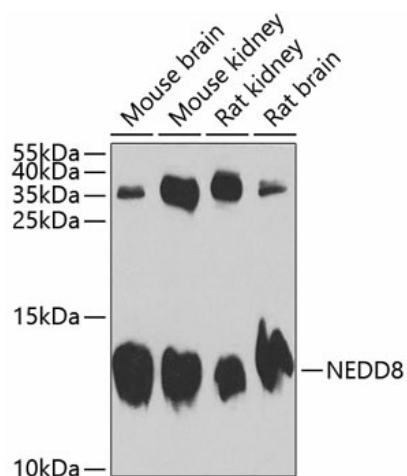
NEDD8 Rabbit Polyclonal Antibody

Product data:

Product Type:	Primary Antibodies
Applications:	ELISA, WB
Recommended Dilution:	WB, 1:500 - 1:2000 ELISA, Recommended starting concentration is 1 µg/mL. Please optimize the concentration based on your specific assay requirements.
Reactivity:	Mouse, Rat, Human
Host:	Rabbit
Isotype:	IgG
Clonality:	Polyclonal
Formulation:	Buffer: PBS with 0.02% sodium azide, 50% glycerol, pH 7.3.
Concentration:	lot specific
Purification:	Affinity purification
Conjugation:	Unconjugated
Storage:	Store at -20°C. Avoid freeze / thaw cycles.
Stability:	Stable for 12 months from date of receipt.
Predicted Protein Size:	9kDa
Gene Name:	neural precursor cell expressed, developmentally down-regulated 8
Database Link:	NP_006147 Entrez Gene 18002 Mouse Entrez Gene 25490 Rat Entrez Gene 4738 Human Q15843
Background:	Enables ubiquitin protein ligase binding activity. Acts upstream of or within protein neddylation. Located in cytosol and nucleoplasm. Biomarker of Parkinson's disease and malignant astrocytoma.
Synonyms:	NEDD-8
Protein Families:	Druggable Genome



[View online »](#)

Product images:


Western blot analysis of various lysates using NEDD8 Rabbit pAb (TA326962) at 1:1000 dilution. Secondary antibody: HRP-conjugated Goat anti-Rabbit IgG (H+L) (AS014) at 1:10000 dilution. Lysates/proteins: 25µg per lane. Blocking buffer: 3% nonfat dry milk in TBST. Detection: ECL Enhanced Kit (RM00021). Exposure time: 60s.