

Product datasheet for **TA326956S**

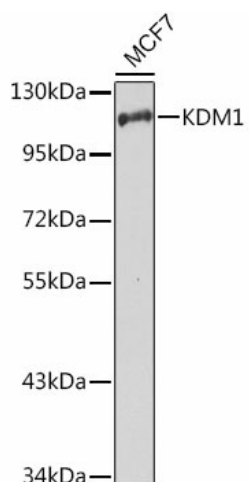
KDM1A Rabbit Polyclonal Antibody

Product data:

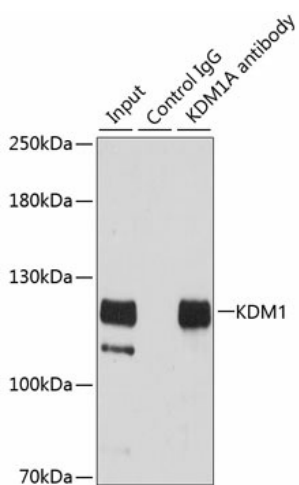
Product Type:	Primary Antibodies
Applications:	ELISA, IP, WB
Recommended Dilution:	WB, 1:500 - 1:2000 IP, 0.5µg-4µg antibody for 200µg-400µg extracts of whole cells ELISA, Recommended starting concentration is 1 µg/mL. Please optimize the concentration based on your specific assay requirements.
Reactivity:	Human, Mouse, Rat
Host:	Rabbit
Isotype:	IgG
Clonality:	Polyclonal
Formulation:	PBS with 0.05% proclin300, 50% glycerol, pH7.3.
Concentration:	lot specific
Purification:	Affinity purification
Conjugation:	Unconjugated
Storage:	Store at -20°C. Avoid freeze / thaw cycles.
Stability:	Stable for 12 months from date of receipt.
Predicted Protein Size:	93kDa
Gene Name:	lysine demethylase 1A
Database Link:	NP_055828 Entrez Gene 99982 Mouse Entrez Gene 500569 Rat Entrez Gene 23028 Human O60341
Background:	This gene encodes a nuclear protein containing a SWIRM domain, a FAD-binding motif, and an amine oxidase domain. This protein is a component of several histone deacetylase complexes, though it silences genes by functioning as a histone demethylase. Alternative splicing results in multiple transcript variants.
Synonyms:	AOF2; BHC110; CPRF; KDM1; LSD1
Protein Families:	Druggable Genome, Transcription Factors



[View online »](#)

Product images:


Western blot analysis of lysates from MCF7 cells



Immunoprecipitation analysis of 200 µg extracts of HeLa cells using 3 µg KDM1 antibody ([TA326956]). Western blot was performed from the immunoprecipitate using KDM1 antibody ([TA326956]) at a dilution of 1:500.