

## Product datasheet for **TA326955**

### **MAD1 (MAD1L1) Rabbit Polyclonal Antibody**

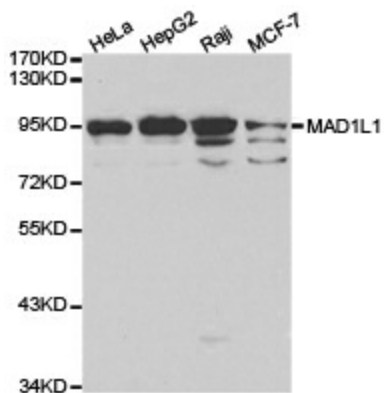
#### **Product data:**

Product Type:	Primary Antibodies
Applications:	ICC/IF, WB
Recommended Dilution:	WB 1:500 - 1:2000;IF 1:50- 1:200
Reactivity:	Human
Host:	Rabbit
Isotype:	IgG
Clonality:	Polyclonal
Immunogen:	Recombinant protein of human MAD1L1
Formulation:	Store at -20C or -80C. Avoid freeze / thaw cycles. Buffer: PBS with 0.02% sodium azide, 50% glycerol, pH7.3
Concentration:	lot specific
Purification:	Affinity purification
Conjugation:	Unconjugated
Storage:	Store at -20°C as received.
Stability:	Stable for 12 months from date of receipt.
Gene Name:	MAD1 mitotic arrest deficient like 1
Database Link:	<a href="#">NP_003541</a> <a href="#">Entrez Gene 8379 Human</a> <a href="#">Q9Y6D9</a>
Background:	MAD1L1 is a component of the mitotic spindle-assembly checkpoint that prevents the onset of anaphase until all chromosome are properly aligned at the metaphase plate. MAD1L1 functions as a homodimer and interacts with MAD2L1. MAD1L1 may play a role in cell cycle control and tumor suppression. Three transcript variants encoding the same protein have been found for this gene.
Synonyms:	MAD1; PIG9; TP53I9; TXBP181
Protein Families:	Druggable Genome
Protein Pathways:	Cell cycle

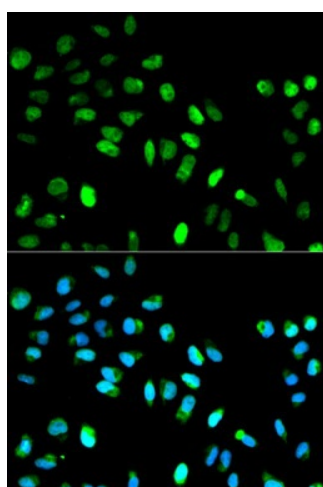


[View online »](#)

## Product images:



Western blot analysis of extracts of various cell lines, using MAD1L1 antibody.



Immunofluorescence analysis of HeLa cell using MAD1L1 antibody. Blue: DAPI for nuclear staining.