

Product datasheet for **TA326948S**

Ferritin Heavy Chain (FTH1) Rabbit Polyclonal Antibody

Product data:

Product Type:	Primary Antibodies
Applications:	ICC/IF, IHC, WB
Recommended Dilution:	WB 1:500 - 1:2000;IF 1:50- 1:200
Reactivity:	Human, Mouse, Rat
Host:	Rabbit
Isotype:	IgG
Clonality:	Polyclonal
Immunogen:	Recombinant protein of human FTH1
Formulation:	Store at -20C or -80C. Avoid freeze / thaw cycles. Buffer: PBS with 0.02% sodium azide, 50% glycerol, pH7.3
Concentration:	lot specific
Purification:	Affinity purification
Conjugation:	Unconjugated
Storage:	Store at -20°C as received.
Stability:	Stable for 12 months from date of receipt.
Gene Name:	ferritin heavy chain 1
Database Link:	NP_002023 Entrez Gene 14319 Mouse Entrez Gene 25319 Rat Entrez Gene 2495 Human P02794



[View online »](#)

Background:

Ferritin (FTH) is a ubiquitous and highly conserved protein which plays a major role in iron homeostasis by sequestering and storing iron in a non-toxic and bioavailable form. The assembled ferritin molecule, often referred to as a nanocage, can store up to 4,500 atoms of iron. It forms a holoenzyme of ~450 kDa, consisting of 24 subunits made up of two types of polypeptide chains: ferritin heavy chain and ferritin light chain, each having unique functions. Ferritin heavy chains catalyze the first step in iron storage, the oxidation of Fe(II), whereas ferritin light chains promote the nucleation of ferrihydrite, enabling storage of Fe(III). In addition to iron buffering, heavy chain ferritin also enhances thymidine biosynthesis. Serum ferritin levels serve as an indicator of the amount of iron stored in the body. Serum ferritin is the most sensitive test for anaemia. The level of serum ferritin is markedly elevated in inflammation, malignancy, and iron overload disorders. Research studies have found that defects in ferritin proteins are also associated with several neurodegenerative diseases.

Synonyms:

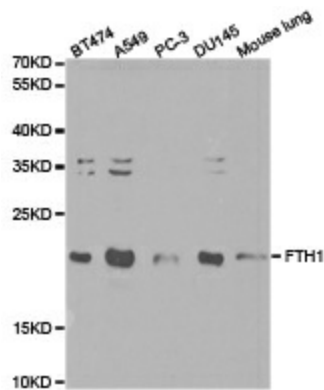
FHC; FTH; FTHL6; HFE5; PIG15; PLIF

Protein Families:

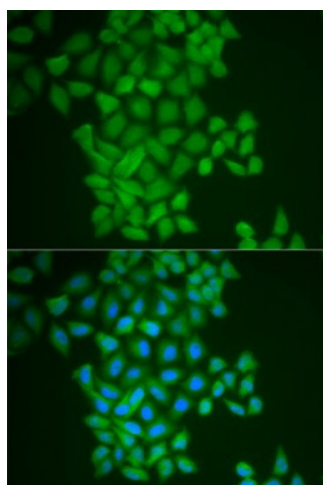
Druggable Genome

Protein Pathways:

Porphyrin and chlorophyll metabolism

Product images:

Western blot analysis of extracts of various cell lines, using FTH1 antibody.



Immunofluorescence analysis of MCF-7 cell using FTH1 antibody. Blue: DAPI for nuclear staining.