

Product datasheet for **TA326947S**

SH2D1A Rabbit Polyclonal Antibody

Product data:

Product Type:	Primary Antibodies
Applications:	ICC/IF, WB
Recommended Dilution:	WB 1:500 - 1:2000;IF 1:50- 1:200
Reactivity:	Human, Mouse
Host:	Rabbit
Isotype:	IgG
Clonality:	Polyclonal
Immunogen:	Recombinant protein of human SH2D1A
Formulation:	Store at -20C or -80C. Avoid freeze / thaw cycles. Buffer: PBS with 0.02% sodium azide, 50% glycerol, pH7.3
Concentration:	lot specific
Purification:	Affinity purification
Conjugation:	Unconjugated
Storage:	Store at -20°C as received.
Stability:	Stable for 12 months from date of receipt.
Gene Name:	SH2 domain containing 1A
Database Link:	NP_002342 Entrez Gene 20400 Mouse Entrez Gene 4068 Human O60880
Background:	SH2D1A and SH2D1B are small, adaptor proteins with a single SH2-domain that play important signal transduction roles mediated by the signaling lymphocytic activation molecule (SLAM) family receptors . SH2D1A (also called SAP or SLAM-associated protein) is frequently mutated in patients with X-linked lymphoproliferative disease (Duncan's disease), which is characterized by extreme susceptibility to Epstein-Barr virus; approximately 50 different SH2D1A mutations have been reported to date. The single SH2D1B gene in humans (also called EAT-2 or Ewing's sarcoma's/FLI1-activated transcript 2) is present as a pair of duplicated EAT-2A and EAT-2B genes with identical genomic organization in mouse and rat.
Synonyms:	DSHP; EBVS; IMD5; LYP; MTCP1; SAP; SH2D1A; XLP; XLPD; XLPD1

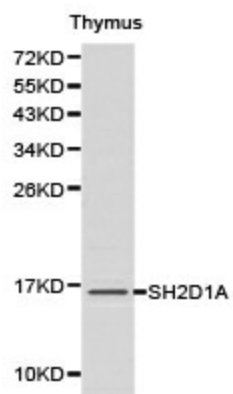


[View online »](#)

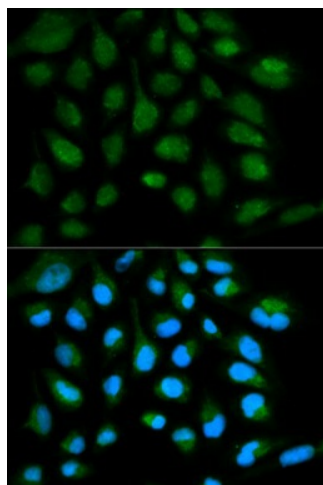
Protein Families: Druggable Genome

Protein Pathways: Natural killer cell mediated cytotoxicity

Product images:



Western blot analysis of thymus cell lysate using SH2D1A antibody.



Immunofluorescence analysis of HeLa cell using SH2D1A antibody. Blue: DAPI for nuclear staining.