

## Product datasheet for **TA326946**

### Aldolase (ALDOA) Rabbit Polyclonal Antibody

#### Product data:

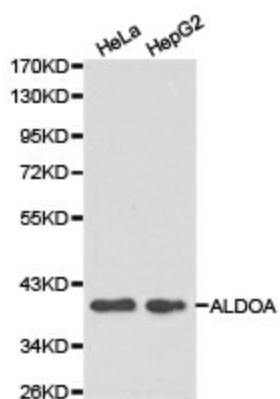
Product Type:	Primary Antibodies
Applications:	ICC/IF, WB
Recommended Dilution:	WB 1:500 - 1:2000;IF 1:20- 1:100
Reactivity:	Human, Mouse
Host:	Rabbit
Isotype:	IgG
Clonality:	Polyclonal
Immunogen:	Recombinant protein of human ALDOA
Formulation:	Store at -20C or -80C. Avoid freeze / thaw cycles. Buffer: PBS with 0.02% sodium azide, 50% glycerol, pH7.3
Concentration:	lot specific
Purification:	Affinity purification
Conjugation:	Unconjugated
Storage:	Store at -20°C as received.
Stability:	Stable for 12 months from date of receipt.
Gene Name:	aldolase, fructose-bisphosphate A
Database Link:	<a href="#">NP_000025</a> <a href="#">Entrez Gene 11674 Mouse</a> <a href="#">Entrez Gene 226 Human</a> <a href="#">P04075</a>
Background:	Aldolase (fructose bisphosphate aldolase), a glycolytic enzyme, catalyzes the conversion of fructose 1, 6-bisphosphate to 3-phosphoglyceraldehyde. This ubiquitous enzyme is present as three different isozymes: aldolase A, aldolase B, and aldolase C. Studies suggest the potential diagnostic value of quantitative analysis of aldolase A for hepatocarcinoma . Furthermore, the change in aldolase B gene expression levels has also been observed in certain patients with this primary tumor.
Synonyms:	ALDA; GSD12; HEL-S-87p
Protein Families:	Druggable Genome



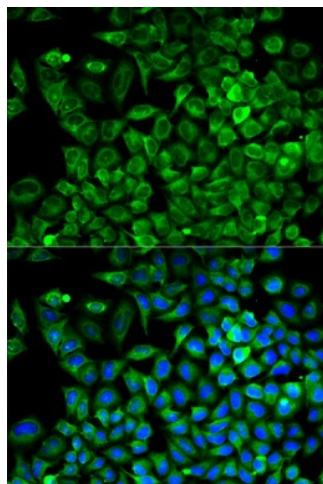
[View online »](#)

**Protein Pathways:** Fructose and mannose metabolism, Glycolysis / Gluconeogenesis, Metabolic pathways, Pentose phosphate pathway

**Product images:**



Western blot analysis of HeLa cell and HepG2 cell lysate using ALDOA antibody.



Immunofluorescence analysis of A549 cell using ALDOA antibody. Blue: DAPI for nuclear staining.