

Product datasheet for **TA326937**

MSH2 Rabbit Polyclonal Antibody

Product data:

Product Type:	Primary Antibodies
Applications:	IF, WB
Recommended Dilution:	WB 1:500 - 1:2000
Reactivity:	Human, Mouse, Rat
Host:	Rabbit
Isotype:	IgG
Clonality:	Polyclonal
Immunogen:	Recombinant protein of human MSH2
Formulation:	Store at -20C or -80C. Avoid freeze / thaw cycles. Buffer: PBS with 0.02% sodium azide, 50% glycerol, pH7.3
Concentration:	lot specific
Purification:	Affinity purification
Conjugation:	Unconjugated
Storage:	Store at -20°C as received.
Stability:	Stable for 12 months from date of receipt.
Gene Name:	mutS homolog 2
Database Link:	NP_000242 Entrez Gene 17685 Mouse Entrez Gene 81709 Rat Entrez Gene 4436 Human P43246

Background: The DNA mismatch repair system (MMR) repairs post-replication DNA, inhibits recombination between non-identical DNA sequences and induces both checkpoint and apoptotic responses following certain types of DNA damage. MSH2 (MutS homologue 2) forms the hMutS-a dimer with MSH6 and is an essential component of the mismatch repair process. hMutS-a is part of the BRCA1-associated surveillance complex (BASC), a complex that also contains BRCA1, MLH1, ATM, BLM, PMS2 proteins and the Rad50-Mre11-NBS1 complex. Mutations in MSH2 have been found in a large proportion of hereditary non-polyposis colorectal cancer (Lynch Syndrome), the most common form of inherited colorectal cancer in the Western world. Mutations have also been associated with other sporadic tumors.



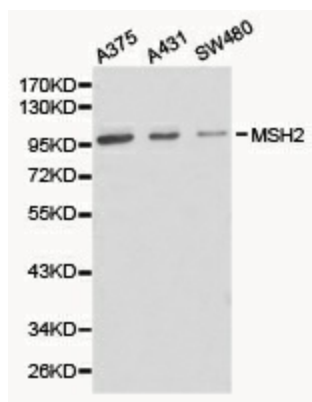
[View online »](#)

Synonyms: COCA1; FCC1; HNPCC; HNPCC1; LCFS2

Protein Families: Druggable Genome, Stem cell - Pluripotency

Protein Pathways: Colorectal cancer, Mismatch repair, Pathways in cancer

Product images:



Western blot analysis of extracts of various cell lines, using MSH2 antibody.