

Product datasheet for **TA326936S**

Annexin A1 (ANXA1) Rabbit Polyclonal Antibody

Product data:

Product Type:	Primary Antibodies
Applications:	ICC/IF, IHC, WB
Recommended Dilution:	WB 1:500 - 1:2000;IF 1:50 - 1:200
Reactivity:	Human, Mouse, Rat
Host:	Rabbit
Isotype:	IgG
Clonality:	Polyclonal
Immunogen:	Recombinant protein of human ANXA1
Formulation:	Store at -20C or -80C. Avoid freeze / thaw cycles. Buffer: PBS with 0.02% sodium azide, 50% glycerol, pH7.3
Concentration:	lot specific
Purification:	Affinity purification
Conjugation:	Unconjugated
Storage:	Store at -20°C as received.
Stability:	Stable for 12 months from date of receipt.
Gene Name:	annexin A1
Database Link:	NP_000691 Entrez Gene 16952 Mouse Entrez Gene 25380 Rat Entrez Gene 301 Human P04083



[View online »](#)

Background:

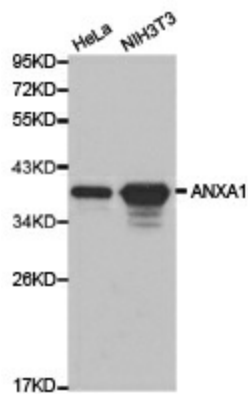
The annexin superfamily consists of 13 calcium or calcium and phospholipid binding proteins with high biological and structural homology . Annexin-1 (ANXA1) is the first characterized member of the annexin family of proteins and is able to bind to cellular membranes in a calcium-dependent manner, promoting membrane fusion and endocytosis . Annexin A1 has anti-inflammatory properties and inhibits phospholipase A2 activity . Annexin A1 can accumulate on internalized vesicles after EGF-stimulated endocytosis and may be required for a late stage in inward vesiculation . Phosphorylation by PKC, EGFR, and Chak1 results in inhibition of annexin A1 function . Annexin A1 has also been identified as one of the eat-me signals on apoptotic cells that are to be recognized and ingested by phagocytes . Annexin A1, as an endogenous anti-inflammatory mediator, has roles in many diverse cellular functions, such as membrane aggregation, inflammation, phagocytosis, proliferation, apoptosis, and tumorigenesis and cancer development .

Synonyms:

ANX1; LPC1

Protein Families:

Druggable Genome

Product images:

Western blot analysis of HeLa cell and NIH3T3 cell lysate using ANXA1 antibody.