

Product datasheet for **TA326932**

Bcl rambo (BCL2L13) Rabbit Polyclonal Antibody

Product data:

Product Type:	Primary Antibodies
Applications:	IF, WB
Recommended Dilution:	WB 1:500 - 1:2000
Reactivity:	Human, Mouse, Rat
Host:	Rabbit
Isotype:	IgG
Clonality:	Polyclonal
Immunogen:	Recombinant protein of human BCL2L13
Formulation:	Store at -20C or -80C. Avoid freeze / thaw cycles. Buffer: PBS with 0.02% sodium azide, 50% glycerol, pH7.3
Concentration:	lot specific
Purification:	Affinity purification
Conjugation:	Unconjugated
Storage:	Store at -20°C as received.
Stability:	Stable for 12 months from date of receipt.
Predicted Protein Size:	53 kDa
Gene Name:	BCL2 like 13
Database Link:	NP_056182 Entrez Gene 94044 MouseEntrez Gene 312682 RatEntrez Gene 23786 Human Q9BXK5



[View online »](#)

Background:

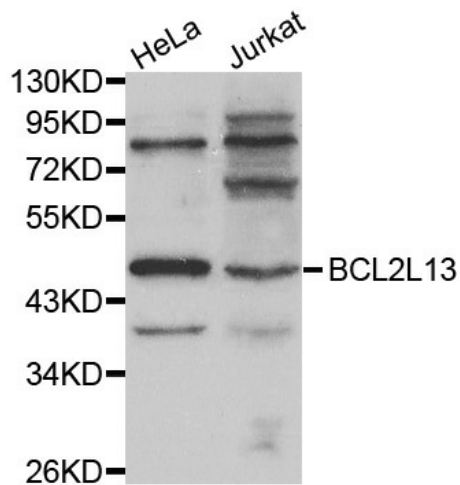
Apoptosis is defined as a set of cascades which, when initiated, program the cell to undergo lethal changes such as membrane blebbing, mitochondrial breakdown and DNA fragmentation. The Bcl-2 family of proteins plays a central regulatory role in apoptosis. Bcl-rambo, a member of the Bcl-2 family, localizes to the mitochondria and, like other Bcl-2 family members, contains all four BH domains. Although Bcl-rambo shares structural similarity to other Bcl-2 members, it differs from them in its unique C-terminal region. Bcl-rambo has a 250 amino acid sequence containing two tandem repeats that precedes the membrane anchor region at its C-terminus. Additionally, it is the membrane anchor C-terminal region of Bcl-rambo, not its Bcl-2 homology motifs, that is responsible for its pro-apoptotic activity. Bcl-rambo induces apoptosis when overexpressed and appears to do so by promoting mitochondrial cyto-chrome c release. It may also facilitate the activation of caspase-3.

Synonyms:

BCL-RAMBO; Bcl2-L-13; MIL1

Protein Families:

Druggable Genome, Transmembrane

Product images:

Western blot analysis of extracts of various cell lines, using BCL2L13 antibody.