

Product datasheet for **TA326920**

Protein Phosphatase 1 beta (PPP1CB) Rabbit Polyclonal Antibody

Product data:

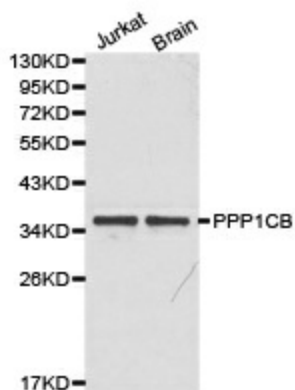
Product Type:	Primary Antibodies
Applications:	ICC/IF, IHC, WB
Recommended Dilution:	WB 1:500 - 1:2000;IF 1:50- 1:200
Reactivity:	Human, Mouse, Rat
Host:	Rabbit
Isotype:	IgG
Clonality:	Polyclonal
Immunogen:	Recombinant protein of human PPP1CB
Formulation:	Store at -20C or -80C. Avoid freeze / thaw cycles. Buffer: PBS with 0.02% sodium azide, 50% glycerol, pH7.3
Concentration:	lot specific
Purification:	Affinity purification
Conjugation:	Unconjugated
Storage:	Store at -20°C as received.
Stability:	Stable for 12 months from date of receipt.
Gene Name:	protein phosphatase 1 catalytic subunit beta
Database Link:	NP_002700 Entrez Gene 19046 Mouse Entrez Gene 25594 Rat Entrez Gene 5500 Human P62140
Background:	Protein phosphatase 1 (PP1) is the main eukaryotic protein serine/threonine phosphatase that regulates an enormous variety of cellular processes including protein-protein interactions, gene transcription, cell-cycle progression and apoptosis. It is a trimeric complex composed of a regulatory subunit, a variable subunit and a catalytic subunit. The catalytic subunit of PP1 (PP1c) can interact with amount of regulatory subunits in vivo that target it to particular subcellular locations and regulate its activity towards specific substrates. PPP1CB migrated as a 37kd protein on SDS page.
Synonyms:	HEL-S-80p; PP-1B; PP1B; PP1beta; PPP1CD
Protein Families:	Druggable Genome, Phosphatase



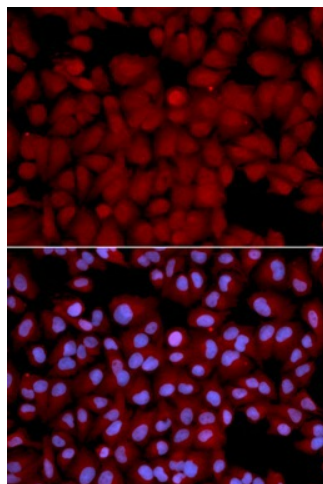
[View online »](#)

Protein Pathways: Focal adhesion, Insulin signaling pathway, Long-term potentiation, Oocyte meiosis, Regulation of actin cytoskeleton, Vascular smooth muscle contraction

Product images:



Western blot analysis of Jurkat cell and brain cell lysate using PPP1CB antibody.



Immunofluorescence analysis of U2OS cell using PPP1CB antibody. Blue: DAPI for nuclear staining.