

Product datasheet for **TA326913S**

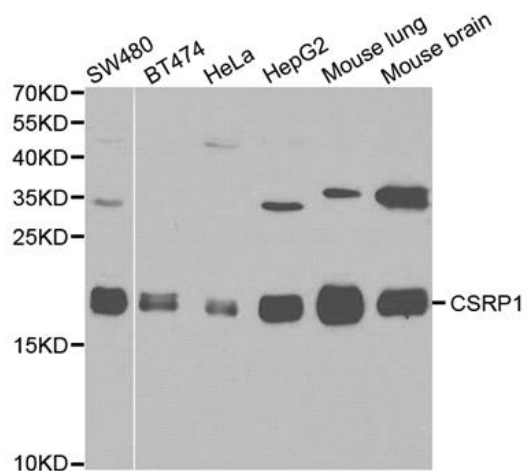
CSRP1 Rabbit Polyclonal Antibody

Product data:

Product Type:	Primary Antibodies
Applications:	IP, RIP, WB
Recommended Dilution:	WB 1:500 - 1:2000;IP 1:20 - 1:50;RIP 1:20 - 1:50
Reactivity:	Human, Mouse
Host:	Rabbit
Isotype:	IgG
Clonality:	Polyclonal
Immunogen:	Recombinant protein of human CSRP1
Formulation:	Store at -20C or -80C. Avoid freeze / thaw cycles. Buffer: PBS with 0.02% sodium azide, 50% glycerol, pH7.3
Concentration:	lot specific
Purification:	Affinity purification
Conjugation:	Unconjugated
Storage:	Store at -20°C as received.
Stability:	Stable for 12 months from date of receipt.
Predicted Protein Size:	21 kDa
Gene Name:	cysteine and glycine rich protein 1
Database Link:	NP_004069 Entrez Gene 13007 Mouse Entrez Gene 1465 Human P21291
Background:	This gene encodes a member of the cysteine-rich protein (CSRP) family. This gene family includes a group of LIM domain proteins, which may be involved in regulatory processes important for development and cellular differentiation. The LIM/double zinc-finger motif found in this gene product occurs in proteins with critical functions in gene regulation, cell growth, and somatic differentiation. Alternatively spliced transcript variants have been described. [provided by RefSeq, Aug 2010]
Synonyms:	CRP; CRP1; CSRP; CYRP; D1S181E; HEL-141



[View online »](#)

Product images:

Western blot analysis of various cell lines, using CSRP1 antibody.