

Product datasheet for **TA326910S**

AKR1A1 Rabbit Polyclonal Antibody

Product data:

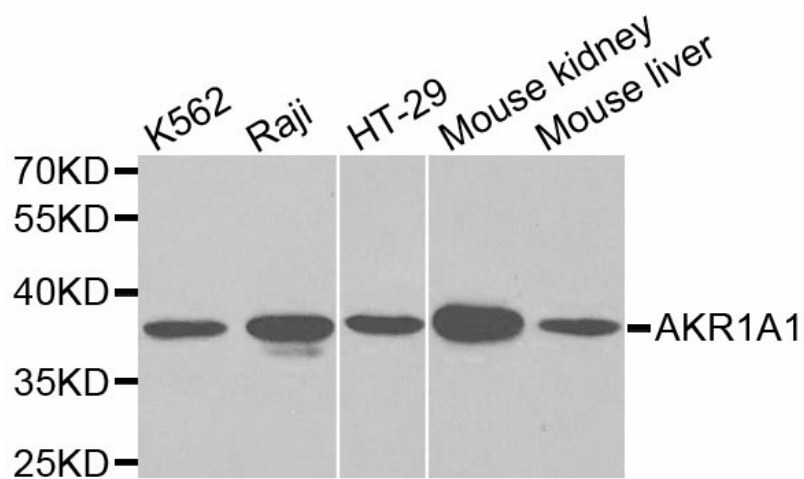
Product Type:	Primary Antibodies
Applications:	IHC, WB
Recommended Dilution:	WB 1:500 - 1:2000
Reactivity:	Human, Mouse, Rat
Host:	Rabbit
Isotype:	IgG
Clonality:	Polyclonal
Immunogen:	Recombinant protein of human AKR1A1
Formulation:	Store at -20C or -80C. Avoid freeze / thaw cycles. Buffer: PBS with 0.02% sodium azide, 50% glycerol, pH7.3
Concentration:	lot specific
Purification:	Affinity purification
Conjugation:	Unconjugated
Storage:	Store at -20°C as received.
Stability:	Stable for 12 months from date of receipt.
Predicted Protein Size:	37 kDa
Gene Name:	aldo-keto reductase family 1, member A1 (aldehyde reductase)
Database Link:	NP_006057 Entrez Gene 58810 MouseEntrez Gene 78959 RatEntrez Gene 10327 Human P14550
Background:	This gene encodes a member of the aldo/keto reductase superfamily, which consists of more than 40 known enzymes and proteins. This member, also known as aldehyde reductase, is involved in the reduction of biogenic and xenobiotic aldehydes and is present in virtually every tissue. Multiple alternatively spliced transcript variants of this gene exist, all encoding the same protein.
Synonyms:	ALDR1; ALR; ARM; DD3; HEL-S-6
Protein Families:	Druggable Genome



[View online »](#)

Protein Pathways: Glycerolipid metabolism, Glycolysis / Gluconeogenesis, Metabolic pathways

Product images:



Western blot analysis of extracts of various cell lines, using AKR1A1 antibody.