

## Product datasheet for **TA326904S**

### G protein beta subunit like (MLST8) Rabbit Polyclonal Antibody

#### Product data:

Product Type:	Primary Antibodies
Applications:	WB
Recommended Dilution:	WB 1:500 - 1:2000
Reactivity:	Human, Mouse, Rat
Host:	Rabbit
Isotype:	IgG
Clonality:	Polyclonal
Immunogen:	Recombinant protein of human MLST8
Formulation:	Store at -20C or -80C. Avoid freeze / thaw cycles. Buffer: PBS with 0.02% sodium azide, 50% glycerol, pH7.3
Concentration:	lot specific
Purification:	Affinity purification
Conjugation:	Unconjugated
Storage:	Store at -20°C as received.
Stability:	Stable for 12 months from date of receipt.
Predicted Protein Size:	36 kDa
Gene Name:	MTOR associated protein, LST8 homolog
Database Link:	<a href="#">NP_071767</a> <a href="#">Entrez Gene 56716 Mouse</a> <a href="#">Entrez Gene 64226 Rat</a> <a href="#">Entrez Gene 64223 Human</a> <a href="#">Q9BVC4</a>

**Background:** Cell growth is a fundamental biological process whereby cells accumulate mass and increase in size. The mammalian Target of Rapamycin (mTOR) pathway regulates growth by coordinating energy and nutrient signals with growth factor-derived signals. mTOR is a large protein kinase with two different complexes. One complex contains mTOR, GβL, and raptor, which is a target of rapamycin. The other complex, insensitive to rapamycin, includes mTOR, GβL, and rictor. GβL associates with the kinase domain of mTOR and stimulates mTOR kinase activity. A reduction in GβL expression has been shown to decrease in vivo phosphorylation of S6K1.

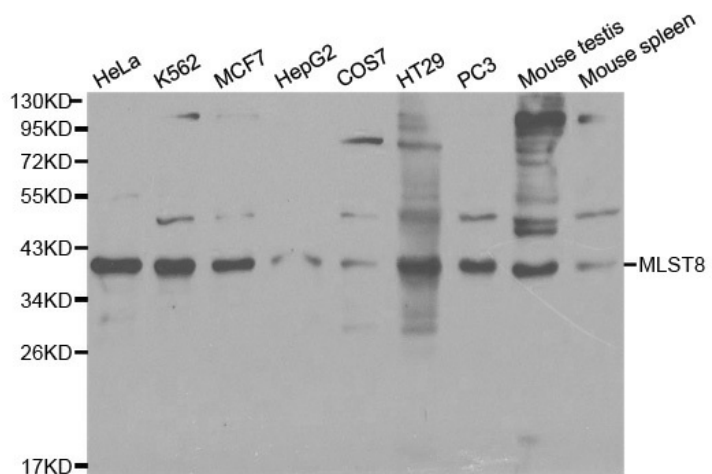


[View online »](#)

Synonyms: GbetaL; GBL; LST8; POP3; WAT1

Protein Pathways: mTOR signaling pathway

### Product images:



Western blot analysis of extracts of various cell lines, using MLST8 antibody.