

Product datasheet for **TA326903S**

14-3-3 epsilon (YWHAE) Rabbit Polyclonal Antibody

Product data:

Product Type:	Primary Antibodies
Applications:	ELISA, ICC/IF, WB
Recommended Dilution:	WB, 1:500 - 1:2000 IF/ICC, 1:50 - 1:200 ELISA, Recommended starting concentration is 1 µg/mL. Please optimize the concentration based on your specific assay requirements.
Reactivity:	Human, Mouse, Rat
Host:	Rabbit
Isotype:	IgG
Clonality:	Polyclonal
Formulation:	PBS with 0.09% Sodium azide, 50% glycerol, pH 7.3.
Concentration:	lot specific
Purification:	Affinity purification
Conjugation:	Unconjugated
Storage:	Store at -20°C. Avoid freeze / thaw cycles.
Stability:	Stable for 12 months from date of receipt.
Predicted Protein Size:	29kDa
Gene Name:	tyrosine 3-monooxygenase/tryptophan 5-monooxygenase activation protein epsilon
Database Link:	NP_006752 Entrez Gene 22627 Mouse Entrez Gene 29753 Rat Entrez Gene 7531 Human P62258



[View online »](#)

Background:

This gene product belongs to the 14-3-3 family of proteins which mediate signal transduction by binding to phosphoserine-containing proteins. This highly conserved protein family is found in both plants and mammals, and this protein is 100% identical to the mouse ortholog. It interacts with CDC25 phosphatases, RAF1 and IRS1 proteins, suggesting its role in diverse biochemical activities related to signal transduction, such as cell division and regulation of insulin sensitivity. It has also been implicated in the pathogenesis of small cell lung cancer. Two transcript variants, one protein-coding and the other non-protein-coding, have been found for this gene.

Synonyms:

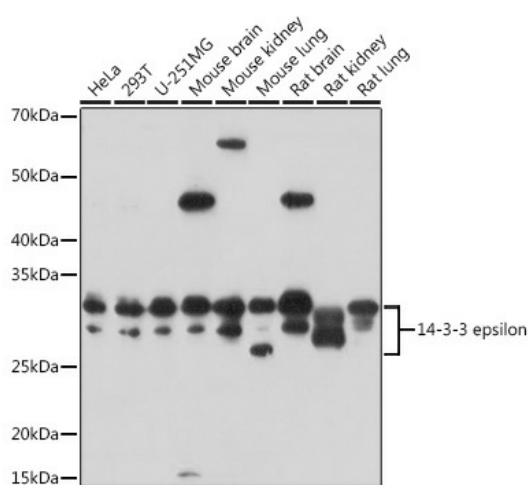
14-3-3E; HEL2; KCIP-1; MDCR; MDS

Protein Families:

Druggable Genome

Protein Pathways:

Cell cycle, Neurotrophin signaling pathway, Oocyte meiosis

Product images:


Western blot analysis of various lysates using 14-3-3 epsilon Rabbit pAb ([TA326903]) at 1:3000 dilution.

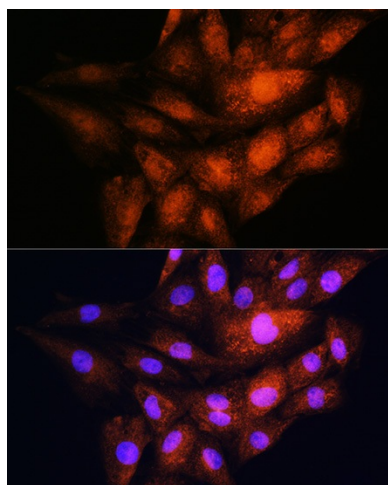
Secondary antibody: HRP-conjugated Goat anti-Rabbit IgG (H+L) (AS014) at 1:10000 dilution.

Lysates/proteins: 25µg per lane.

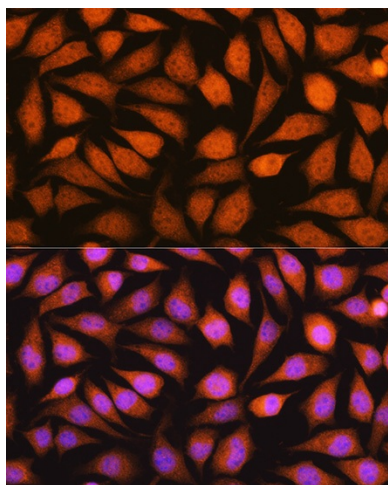
Blocking buffer: 3% nonfat dry milk in TBST.

Detection: ECL Basic Kit (RM00020).

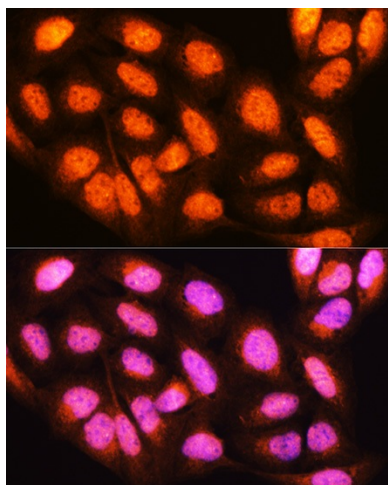
Exposure time: 30s.



Immunofluorescence analysis of H9C2 cells using 14-3-3 epsilon Rabbit pAb ([TA326903]) at dilution of 1:100. Blue: DAPI for nuclear staining.



Immunofluorescence analysis of L929 cells using 14-3-3 epsilon Rabbit pAb ([TA326903]) at dilution of 1:100. Blue: DAPI for nuclear staining.



Immunofluorescence analysis of U2OS cells using 14-3-3 epsilon Rabbit pAb ([TA326903]) at dilution of 1:100. Blue: DAPI for nuclear staining.