

Product datasheet for **TA326901S**

Hexokinase 1 (HK1) Rabbit Polyclonal Antibody

Product data:

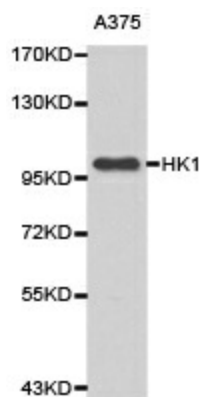
Product Type:	Primary Antibodies
Applications:	ICC/IF, IHC, IP, WB
Recommended Dilution:	WB 1:500 - 1:2000;IF 1:50- 1:200
Reactivity:	Human, Mouse, Rat
Host:	Rabbit
Isotype:	IgG
Clonality:	Polyclonal
Immunogen:	Recombinant protein of human HK1
Formulation:	Store at -20C or -80C. Avoid freeze / thaw cycles. Buffer: PBS with 0.02% sodium azide, 50% glycerol, pH7.3
Concentration:	lot specific
Purification:	Affinity purification
Conjugation:	Unconjugated
Storage:	Store at -20°C as received.
Stability:	Stable for 12 months from date of receipt.
Gene Name:	hexokinase 1
Database Link:	NP_000179 Entrez Gene 15275 Mouse Entrez Gene 25058 Rat Entrez Gene 3098 Human P19367
Background:	Hexokinase catalyzes the conversion of glucose to glucose-6-phosphate, the first step in glycolysis. Four distinct mammalian hexokinase isoforms, designated as hexokinase I, II, III, and IV (glucokinase), have been identified. Hexokinases I, II, and III are associated with the outer mitochondrial membrane and are critical for maintaining an elevated rate of aerobic glycolysis in cancer cells (Warburg Effect) in order to compensate for the increased energy demands associated with rapid cell growth and proliferation .
Synonyms:	hexokinase; HK; HK1-ta; HK1-tb; HK1-tc; HKD; HKI; HMSNR; HXK1
Protein Families:	Druggable Genome



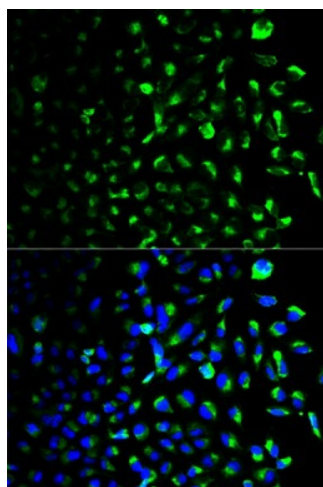
[View online »](#)

Protein Pathways:

Amino sugar and nucleotide sugar metabolism, Fructose and mannose metabolism, Galactose metabolism, Glycolysis / Gluconeogenesis, Insulin signaling pathway, Metabolic pathways, Starch and sucrose metabolism, Type II diabetes mellitus

Product images:

Western blot analysis of A375 cell lysate using HK1 antibody.



Immunofluorescence analysis of U2OS cell using HK1 antibody. Blue: DAPI for nuclear staining.