

Product datasheet for **TA326900S**

MTAP Rabbit Polyclonal Antibody

Product data:

Product Type:	Primary Antibodies
Applications:	ICC/IF, IHC, WB
Recommended Dilution:	WB 1:500 - 1:2000;IF 1:50- 1:200
Reactivity:	Human, Mouse, Rat
Host:	Rabbit
Isotype:	IgG
Clonality:	Polyclonal
Immunogen:	Recombinant protein of human MTAP
Formulation:	Store at -20C or -80C. Avoid freeze / thaw cycles. Buffer: PBS with 0.02% sodium azide, 50% glycerol, pH7.3
Concentration:	lot specific
Purification:	Affinity purification
Conjugation:	Unconjugated
Storage:	Store at -20°C as received.
Stability:	Stable for 12 months from date of receipt.
Gene Name:	methylthioadenosine phosphorylase
Database Link:	NP_002442 Entrez Gene 66902 Mouse Entrez Gene 298227 Rat Entrez Gene 4507 Human Q13126

Background: MTAP is an enzyme that is essential for the salvage pathway for both adenine and methionine synthesis. MTAP catalyzes the cleavage of 5_i⁻-methylthioadenosine into adenine and 5-methylthio-D-ribose-1-phosphate. Adenine is then used to generate AMP whereas 5-methylthio-D-ribose-1-phosphate is converted into methionine. MTAP is expressed in all normal cells and tissues, although frequently lost in different human tumors including pancreatic adenocarcinoma, neuroendocrine tumors, non-small cell lung carcinoma and breast carcinoma. MTAP is usually codeleted with p16 (cdkN2a/ARF). MTAP overexpression in breast cancer cells inhibits their ability to form colonies in soft agar, thereby implicating its function as a tumor suppressor .



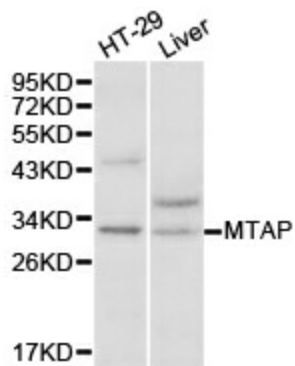
[View online »](#)

Synonyms: BDMF; c86fus; DMSFH; DMSMFH; HEL-249; LGMBF; MSAP

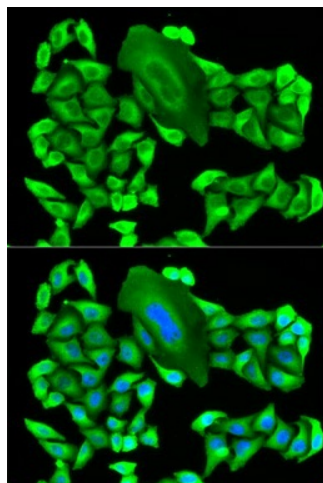
Protein Families: Druggable Genome

Protein Pathways: Cysteine and methionine metabolism, Metabolic pathways

Product images:



Western blot analysis of HT-29 cell and liver cell lysate using MTAP antibody.



Immunofluorescence analysis of HeLa cell using MTAP antibody. Blue: DAPI for nuclear staining.