

Product datasheet for **TA326892S**

ADA Rabbit Polyclonal Antibody

Product data:

Product Type:	Primary Antibodies
Applications:	ELISA, ICC/IF, WB
Recommended Dilution:	WB, 1:500 - 1:1000 IF/ICC, 1:50 - 1:200 ELISA, Recommended starting concentration is 1 µg/mL. Please optimize the concentration based on your specific assay requirements.
Reactivity:	Human, Rat
Host:	Rabbit
Isotype:	IgG
Clonality:	Polyclonal
Formulation:	PBS with 0.05% proclin300, 50% glycerol, pH7.3.
Concentration:	lot specific
Purification:	Affinity purification
Conjugation:	Unconjugated
Storage:	Store at -20°C. Avoid freeze / thaw cycles.
Stability:	Stable for 12 months from date of receipt.
Predicted Protein Size:	41kDa
Gene Name:	adenosine deaminase
Database Link:	NP_000013 Entrez Gene 24165 Rat Entrez Gene 100 Human P00813
Background:	This gene encodes an enzyme that catalyzes the hydrolysis of adenosine to inosine in the purine catabolic pathway. Various mutations have been described for this gene and have been linked to human diseases related to impaired immune function such as severe combined immunodeficiency disease (SCID) which is the result of a deficiency in the ADA enzyme. In ADA-deficient individuals there is a marked depletion of T, B, and NK lymphocytes, and consequently, a lack of both humoral and cellular immunity. Conversely, elevated levels of this enzyme are associated with congenital hemolytic anemia.



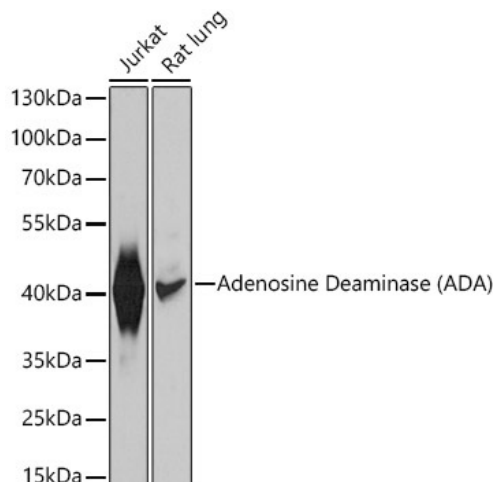
[View online »](#)

Synonyms: adenosine aminohydrolase; adenosine deaminase

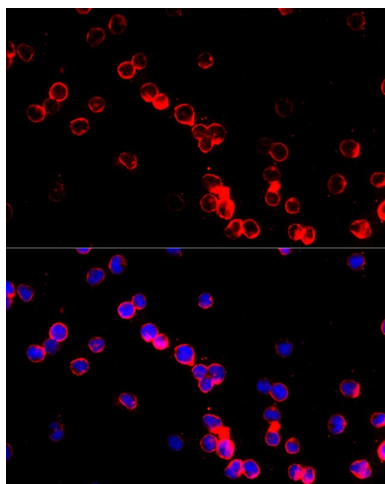
Protein Families: Druggable Genome

Protein Pathways: Metabolic pathways, Primary immunodeficiency, Purine metabolism

Product images:



Western blot analysis of various lysates using Adenosine Deaminase (ADA) Rabbit pAb ([TA326892]) at 1:1000 dilution. Secondary antibody: HRP-conjugated Goat anti-Rabbit IgG (H+L) (AS014) at 1:10000 dilution. Lysates/proteins: 25µg per lane. Blocking buffer: 3% nonfat dry milk in TBST. Detection: ECL Basic Kit (RM00020). Exposure time: 5s.



Immunofluorescence analysis of U2OS cells using Adenosine Deaminase (ADA) Rabbit pAb ([TA326892]) at dilution of 1:100. Blue: DAPI for nuclear staining.