

## Product datasheet for **TA326892**

### ADA Rabbit Polyclonal Antibody

#### Product data:

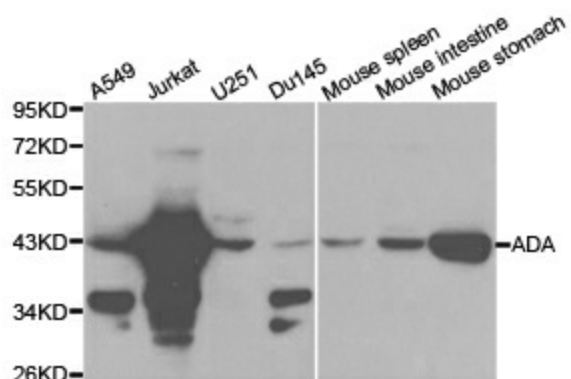
Product Type:	Primary Antibodies
Applications:	ICC/IF, WB
Recommended Dilution:	WB 1:500 - 1:2000;IF 1:50- 1:200
Reactivity:	Human, Rat
Host:	Rabbit
Isotype:	IgG
Clonality:	Polyclonal
Immunogen:	Recombinant protein of human ADA
Formulation:	Store at -20C or -80C. Avoid freeze / thaw cycles. Buffer: PBS with 0.02% sodium azide, 50% glycerol, pH7.3
Concentration:	lot specific
Purification:	Affinity purification
Conjugation:	Unconjugated
Storage:	Store at -20°C as received.
Stability:	Stable for 12 months from date of receipt.
Gene Name:	adenosine deaminase
Database Link:	<a href="#">NP_000013</a> <a href="#">Entrez Gene 24165 Rat</a> <a href="#">Entrez Gene 100 Human</a> <a href="#">P00813</a>
Background:	This gene encodes an enzyme that catalyzes the hydrolysis of adenosine to inosine. Various mutations have been described for this gene and have been linked to human diseases. Deficiency in this enzyme causes a form of severe combined immunodeficiency disease (SCID), in which there is dysfunction of both B and T lymphocytes with impaired cellular immunity and decreased production of immunoglobulins, whereas elevated levels of this enzyme have been associated with congenital hemolytic anemia. [provided by RefSeq, Jul 2008]
Synonyms:	adenosine aminohydrolase; adenosine deaminase
Protein Families:	Druggable Genome



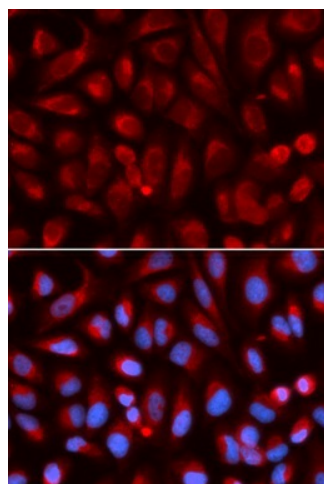
[View online »](#)

Protein Pathways: Metabolic pathways, Primary immunodeficiency, Purine metabolism

**Product images:**



Western blot analysis of extracts of various cell lines, using ADA antibody.



Immunofluorescence analysis of U2OS cell using ADA antibody. Blue: DAPI for nuclear staining.