

## Product datasheet for **TA326883**

### **PARK7 Rabbit Polyclonal Antibody**

#### **Product data:**

Product Type:	Primary Antibodies
Applications:	ICC/IF, WB
Recommended Dilution:	WB 1:500 - 1:2000;IF 1:50- 1:200
Reactivity:	Human, Mouse
Host:	Rabbit
Isotype:	IgG
Clonality:	Polyclonal
Immunogen:	Recombinant protein of human PARK7
Formulation:	Store at -20C or -80C. Avoid freeze / thaw cycles. Buffer: PBS with 0.02% sodium azide, 50% glycerol, pH7.3
Concentration:	lot specific
Purification:	Affinity purification
Conjugation:	Unconjugated
Storage:	Store at -20°C as received.
Stability:	Stable for 12 months from date of receipt.
Gene Name:	Parkinsonism associated deglycase
Database Link:	<a href="#">NP_009193</a> <a href="#">Entrez Gene 57320 Mouse</a> <a href="#">Entrez Gene 11315 Human</a> <a href="#">Q99497</a>



[View online »](#)

**Background:**

Parkinsons disease (PD) is characterized by the presence of Lewy bodies (intracellular inclusions) and by the loss of dopaminergic neurons. Research studies have shown that mutations in a-synuclein, Parkin, and DJ-1 are linked to PD. a-synuclein is a major component of the aggregates found in Lewy bodies. Parkin is involved in protein degradation through the ubiquitin-proteasome pathway, and investigators have shown that mutations in Parkin cause early onset of PD. Loss-of-function mutations in DJ-1 cause early onset of PD, but DJ-1 is associated with multiple functions: it cooperates with Ras to increase cell transformation, it positively regulates transcription of the androgen receptor, and it may function as an indicator of oxidative stress. Dopamine D2 receptor-mediated functions are greatly impaired in DJ-1 (-/-) mice, resulting in reduced long-term depression.

**Synonyms:**

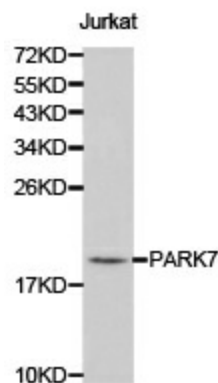
DJ-1; DJ1; HEL-S-67p

**Protein Families:**

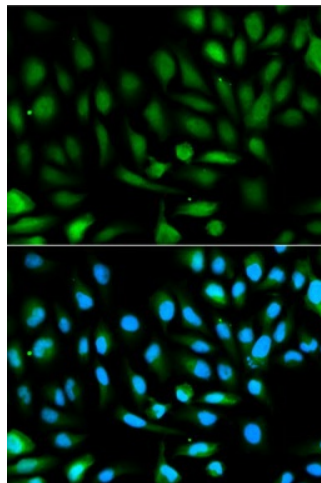
Druggable Genome, Protease

**Protein Pathways:**

Parkinson's disease

**Product images:**

Western blot analysis of Jurkat cell lysate using PARK7 antibody.



Immunofluorescence analysis of HeLa cell using PARK7 antibody. Blue: DAPI for nuclear staining.