

Product datasheet for **TA326882**

SNAP25 Rabbit Polyclonal Antibody

Product data:

Product Type:	Primary Antibodies
Applications:	ICC/IF, IHC, WB
Recommended Dilution:	WB 1:500 - 1:2000;IF 1:20- 1:100
Reactivity:	Human, Mouse, Rat
Host:	Rabbit
Isotype:	IgG
Clonality:	Polyclonal
Immunogen:	Recombinant protein of human SNAP25
Formulation:	Store at -20C or -80C. Avoid freeze / thaw cycles. Buffer: PBS with 0.02% sodium azide, 50% glycerol, pH7.3
Concentration:	lot specific
Purification:	Affinity purification
Conjugation:	Unconjugated
Storage:	Store at -20°C as received.
Stability:	Stable for 12 months from date of receipt.
Gene Name:	synaptosome associated protein 25kDa
Database Link:	NP_003072 Entrez Gene 20614 Mouse Entrez Gene 25012 Rat Entrez Gene 6616 Human P60880

Background: The 25 kDa synaptosome-associated protein (SNAP25) is a target membrane soluble, N-ethylmaleimide-sensitive factor attachment protein receptor (t-SNARE) that is found on neuronal presynaptic membranes. SNAP25 forms a core complex with the SNARE proteins syntaxin and synaptobrevin to mediate synaptic vesicle fusion with the plasma membrane during Ca²⁺-dependent exocytosis. This complex is responsible for exocytosis of the neurotransmitter γ -aminobutyric acid (GABA). Neurotransmitter release is inhibited by proteolysis of SNAP25 by botulinum toxins A and E. SNAP25 plays a secondary role as a Q-SNARE involved in endosome fusion; the protein is associated with genetic susceptibility to attention-deficit hyperactivity disorder (ADHD).



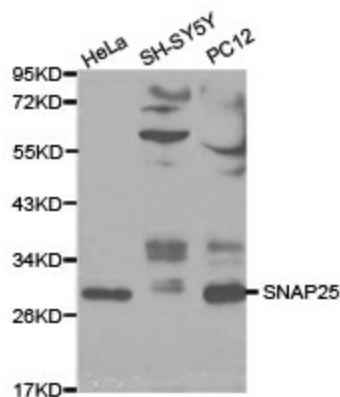
[View online »](#)

Synonyms: bA416N4.2; dj1068F16.2; RIC-4; RIC4; SEC9; SNAP; SNAP-25

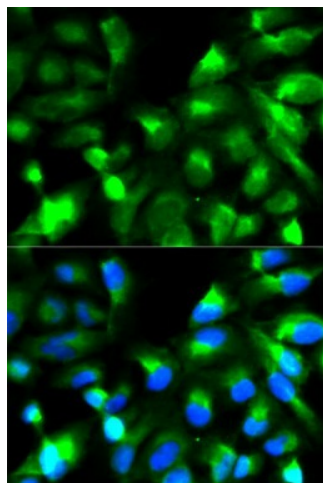
Protein Families: Druggable Genome

Protein Pathways: SNARE interactions in vesicular transport

Product images:



Western blot analysis of extracts of various cell lines, using SNAP25 antibody.



Immunofluorescence analysis of HeLa cell using SNAP25 antibody. Blue: DAPI for nuclear staining.