

## Product datasheet for **TA326874S**

### RAN Rabbit Polyclonal Antibody

#### Product data:

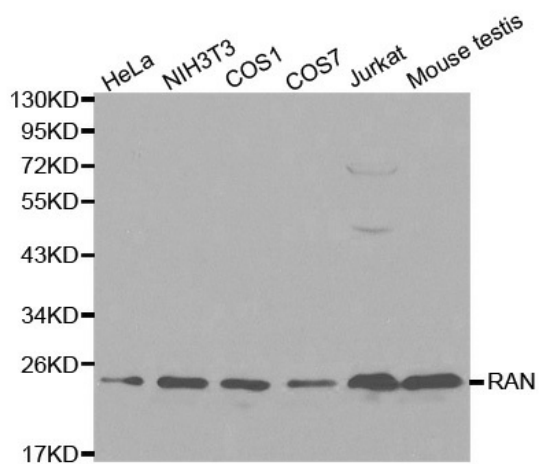
|                         |  |
|-------------------------|--|
| Product Type:           | Primary Antibodies   |
| Applications:           | ICC/IF, WB   |
| Recommended Dilution:   | WB 1:500 - 1:2000;IF 1:50 - 1:200  |
| Reactivity:             | Mouse, Rat   |
| Host:                   | Rabbit   |
| Isotype:                | IgG  |
| Clonality:              | Polyclonal   |
| Immunogen:              | Recombinant protein of human RAN   |
| Formulation:            | Store at -20C or -80C. Avoid freeze / thaw cycles. Buffer: PBS with 0.02% sodium azide, 50% glycerol, pH7.3  |
| Concentration:          | lot specific   |
| Purification:           | Affinity purification  |
| Conjugation:            | Unconjugated   |
| Storage:                | Store at -20°C as received.  |
| Stability:              | Stable for 12 months from date of receipt.   |
| Predicted Protein Size: | 25 kDa   |
| Gene Name:              | RAN, member RAS oncogene family  |
| Database Link:          | <a href="#">NP_006316</a><br><a href="#">Entrez Gene 19384 Mouse</a> <a href="#">Entrez Gene 84509 Rat</a><br><a href="#">P62826</a>   |
| Background:             | Ran is a small GTPase of the Ras family that plays a central role in the spacial and temporal organization of eukaryotic cells. During interphase, Ran-GDP localizes to the cytoplasm and Ran-GTP to the nucleus. This polarized localization of Ran ensures its role in nuclear transport. During mitosis, Ran-GTP is chromatin associated, where it promotes spindle assembly and nuclear envelope formation. In S phase, Ran-GTP associates with and inhibits MCM helicase, ensuring precise chromosomal DNA duplication during the cell cycle. |
| Synonyms:               | ARA24; Gsp1; TC4   |



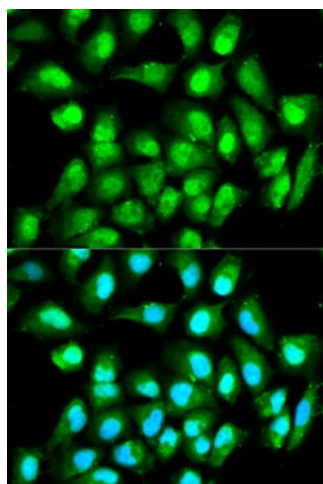
[View online »](#)

Protein Families: Druggable Genome, Transcription Factors

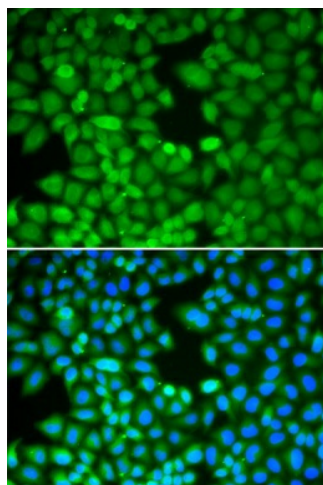
### Product images:



Western blot analysis of extracts of various cell lines, using RAN antibody.



Immunofluorescence analysis of HeLa cell using RAN antibody. Blue: DAPI for nuclear staining.



Immunofluorescence analysis of MCF-7 cell using RAN antibody. Blue: DAPI for nuclear staining.